



**Synonym**

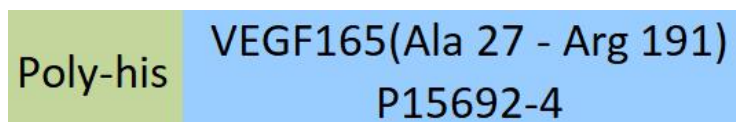
RP1-261G23.1,MGC70609,MVCD1,VEGFA,VPF

**Source**

FITC-Labeled Human VEGF165, His Tag(VE5-HF248) is expressed from human 293 cells (HEK293). It contains AA Ala 27 - Arg 191 (Accession # [P15692-4](#)).

Predicted N-terminus: His

**Molecular Characterization**



This protein carries a polyhistidine tag at the N-terminus.

The protein has a calculated MW of 21.1 kDa. The protein migrates as 27-30 kDa under reducing (R) condition (SDS-PAGE) due to glycosylation.

**Conjugate**

FITC

Excitation source: 488 nm spectral line, argon-ion laser

Excitation Wavelength: 488 nm

Emission Wavelength: 535 nm

**Labeling**

*The primary amines in the side chains of lysine residues and the N-terminus of the protein are conjugated with FITC using standard chemical labeling method. The residual FITC is removed by molecular sieve treatment during purification process.*

**Protein Ratio**

The FITC to protein molar ratio is 1.5-3.5.

**Endotoxin**

Less than 1.0 EU per µg by the LAL method.

**Purity**

>90% as determined by SDS-PAGE.

**Formulation**

Lyophilized from 0.22 µm filtered solution in PBS, pH7.4 with trehalose as protectant.

Contact us for customized product form or formulation.

**Reconstitution**

Please see Certificate of Analysis for specific instructions.

*For best performance, we strongly recommend you to follow the reconstitution protocol provided in the CoA.*

**Storage**

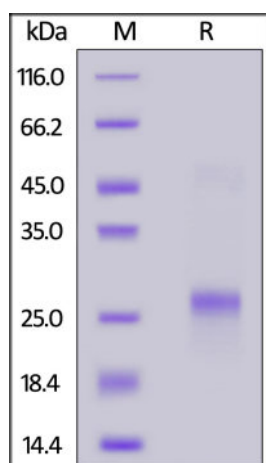
For long term storage, the product should be stored at lyophilized state at -20°C or lower.

*Please protect from light and avoid repeated freeze-thaw cycles.*

This product is stable after storage at:

- -20°C to -70°C for 12 months in lyophilized state;
- -70°C for 3 months under sterile conditions after reconstitution.

**SDS-PAGE**



Discounts, Gifts,  
and more!



# FITC-Labeled Human VEGF165 Protein, His Tag

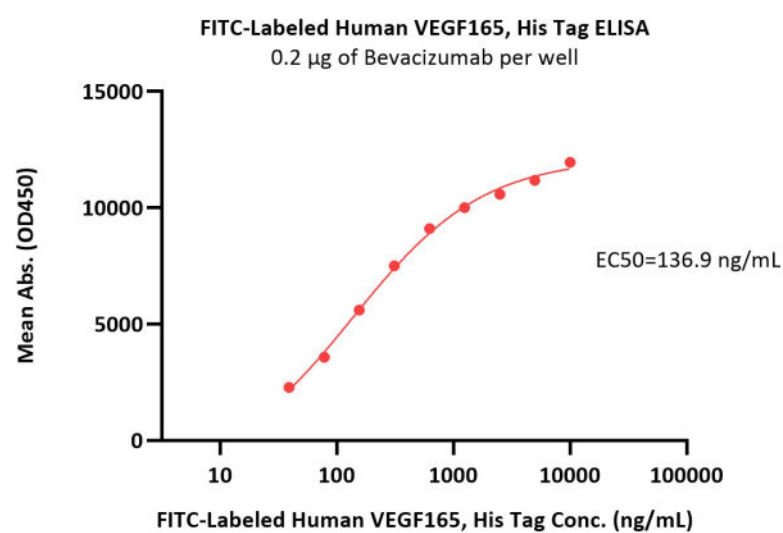
Catalog # VE5-HF248



BIOSYSTEMS  
**Acro**

FITC-Labeled Human VEGF165, His Tag on SDS-PAGE under reducing (R) condition. The gel was stained with Coomassie Blue. The purity of the protein is greater than 90%.

## Bioactivity-ELISA



Immobilized Bevacizumab at 2 µg/mL (100 µL/well) can bind FITC-Labeled Human VEGF165, His Tag (Cat. No. VE5-HF248) with a linear range of 39-156 ng/mL (QC tested).

## Background

VEGF165 is the most abundant splice variant of VEGF-A. VEGF165 is produced by a number of cells including endothelial cells, macrophages and T cells. VEGF165 is involved in angiogenesis, vascular endothelial cell survival, growth, migration and vascular permeability. VEGF gene expression is induced by hypoxia, inflammatory cytokines and oncogenes. VEGF165 binds to heparan sulfate and is retained on the cell surface and in the extracellular matrix. VEGF165 binds to the receptor tyrosine kinases, VEGFR1 and VEGFR2. VEGF165 is the only splice variant that binds to co-receptors NRP-1 and NRP-2 that function to enhance VEGFR2 signaling. Binding of VEGF165 to VEGFR1 and VEGFR2 leads to activation of the PI3K/AKT, p38 MAPK, FAK and paxillin. VEGF plays a key role in tumor angiogenesis in many cancers.

## Clinical and Translational Updates

Discounts, Gifts,  
and more!



➤ [www.acrobiosystems.com](http://www.acrobiosystems.com)

5/9/2024