

**Synonym**

SIGLEC10,MGC126774,PRO940,Siglec10,SLG2

**Source**

Human Siglec-10, His Tag(SI0-H52H9) is expressed from human 293 cells (HEK293). It contains AA Met 17 - Thr 546 (Accession # [Q96LC7-1](#) ).

Predicted N-terminus: Met 17

**Molecular Characterization**

Siglec-10(Met 17 - Thr 546) Q96LC7-1	Poly-his
-----------------------------------------	----------

This protein carries a polyhistidine tag at the C-terminus.

The protein has a calculated MW of 60.1 kDa. The protein migrates as 65-80 kDa under reducing (R) condition (SDS-PAGE) due to glycosylation.

**Endotoxin**

Less than 1.0 EU per µg by the LAL method.

**Purity**

>95% as determined by SDS-PAGE.

>90% as determined by SEC-MALS.

**Formulation**

Lyophilized from 0.22 µm filtered solution in 25 mM MES, 150 mM NaCl, Arginine, pH5.5 with trehalose as protectant.

Contact us for customized product form or formulation.

**Reconstitution**

Please see Certificate of Analysis for specific instructions.

*For best performance, we strongly recommend you to follow the reconstitution protocol provided in the CoA.*

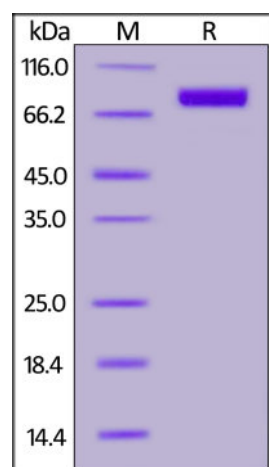
**Storage**

For long term storage, the product should be stored at lyophilized state at -20°C or lower.

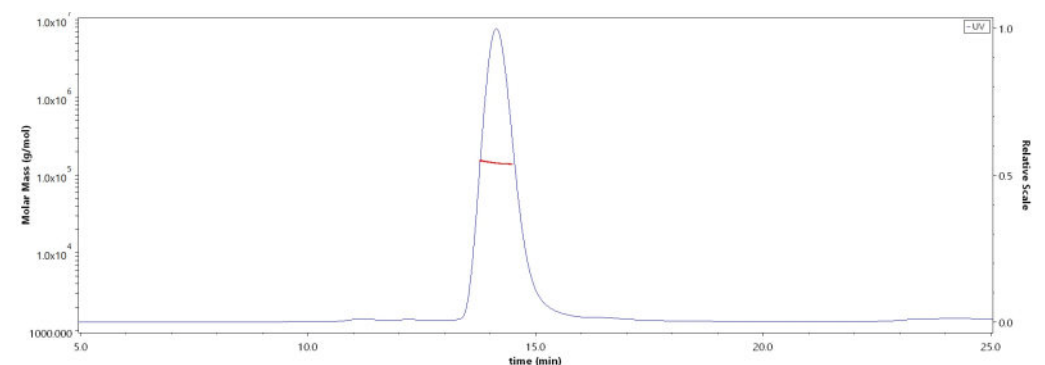
*Please avoid repeated freeze-thaw cycles.*

This product is stable after storage at:

- -20°C to -70°C for 12 months in lyophilized state;
- -70°C for 3 months under sterile conditions after reconstitution.

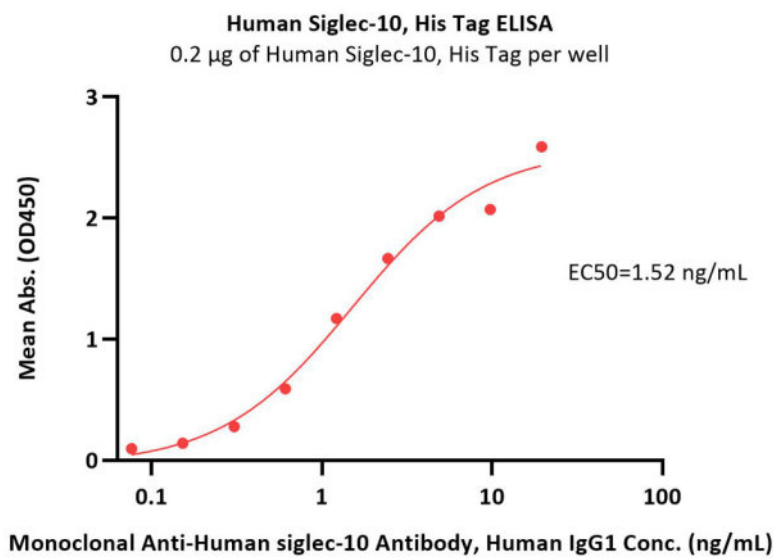
**SDS-PAGE**

Human Siglec-10, His Tag on SDS-PAGE under reducing (R) condition. The gel was stained with Coomassie Blue. The purity of the protein is greater than 95%.

**Bioactivity-ELISA****SEC-MALS**

The purity of Human Siglec-10, His Tag (Cat. No. SI0-H52H9) is more than 90% and the molecular weight of this protein is around 132-160 kDa verified by SEC-MALS.

[Report](#)



Immobilized Human Siglec-10, His Tag (Cat. No. SI0-H52H9) at 2 µg/mL (100 µL/well) can bind Monoclonal Anti-Human siglec-10 Antibody, Human IgG1 with a linear range of 0.08-2 ng/mL (QC tested).

## Background

The siglecs (sialic acid-binding Ig-like lectins) are a distinct subset of the Ig superfamily with adhesion-molecule-like structure. We describe here a novel member of the siglec protein family that shares a similar structure including five Ig-like domains, a transmembrane domain, and a cytoplasmic tail containing two ITIM-signaling motifs. Siglec-10 was identified through database mining of an asthmatic eosinophil EST library. The Siglec-10-VAP-1 interaction seems to mediate lymphocyte adhesion to endothelium and has the potential to modify the inflammatory microenvironment via the enzymatic end products.

## Clinical and Translational Updates

Please contact us via [TechSupport@acrobiosystems.com](mailto:TechSupport@acrobiosystems.com) if you have any question on this product.