



Source

Monoclonal Anti-MMAF specific Antibody, Rabbit IgG (1M1G10) is a Rabbit monoclonal antibody recombinantly expressed from HEK293 cells.

Clone

1M1G10

Species

Rabbit

Isotype

Rabbit IgG | Rabbit Kappa

Conjugate

Unconjugated

Antibody Type

Recombinant Monoclonal

Immunogen

MMAF-BSA.

Specificity

Specifically recognizes MMAF, no recrecognizes MMAE.

Application

Application	Recommended Usage
ELISA	0.1-125 ng/mL

Cross Verification

This product can cross in Elisa with MMAF.

This product No cross-reactivity in ELISA with Doxorubicin.  
(PBD)SG3199.  
Monomethyl auristatin E.  
Trastuzumab Biosimilar.

Purity

>90% as determined by SDS-PAGE.  
>90% as determined by SEC-MALS.

Purification

Protein A purified / Protein G purified

Formulation

Lyophilized from 0.22 µm filtered solution in PBS, pH7.5 with trehalose as protectant.  
  
Contact us for customized product form or formulation.

Reconstitution

Please see Certificate of Analysis for specific instructions.  
  
*For best performance, we strongly recommend you to follow the reconstitution protocol provided in the CoA.*

Storage

For long term storage, the product should be stored at lyophilized state at -20°C or lower.  
  
*Please avoid repeated freeze-thaw cycles.*

This product is stable after storage at:

- 20°C to -70°C for 12 months in lyophilized state;
- 70°C for 3 months under sterile conditions after reconstitution.

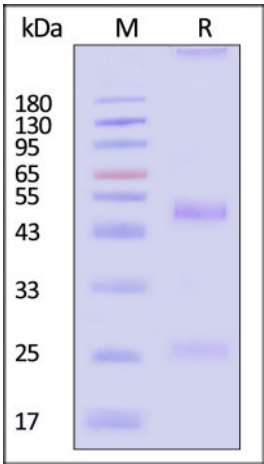
SDS-PAGE

SEC-MALS



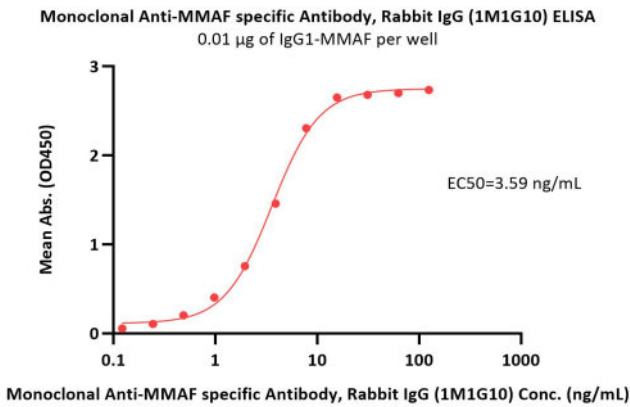
Monoclonal Anti-MMAF specific Antibody, Rabbit IgG (1M1G10) (MALS verified)

Catalog # MMF-MY2213

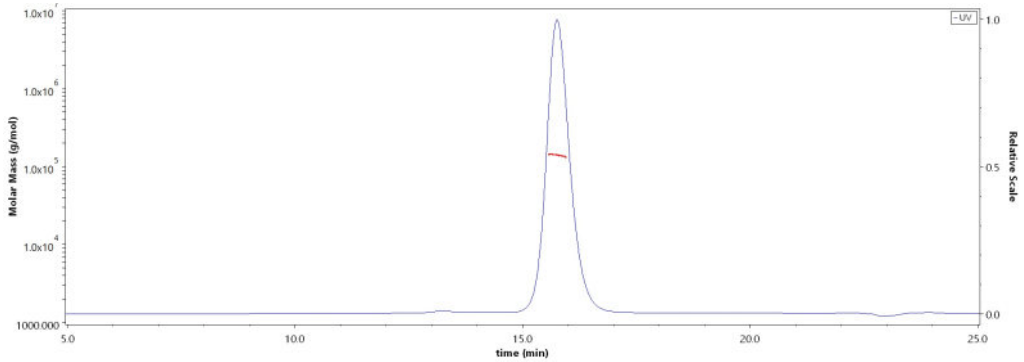


Monoclonal Anti-MMAF specific Antibody, Rabbit IgG (1M1G10) on SDS-PAGE under reducing (R) condition. The gel was stained with Coomassie Blue. The purity of the protein is greater than 90% (With [Star Ribbon Pre-stained Protein Marker](#)).

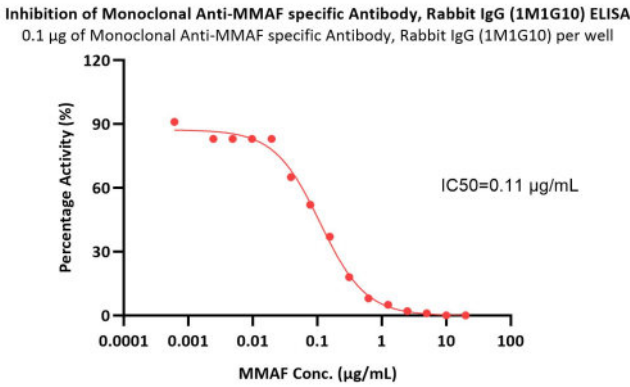
Bioactivity-ELISA



Immobilized IgG1-MMAF at 0.1  $\mu\text{g/mL}$  (100  $\mu\text{L}$ /well) can bind Monoclonal Anti-MMAF specific Antibody, Rabbit IgG (1M1G10) (Cat. No. MMF-MY2213) with a linear range of 0.1-8 ng/mL (QC tested).



The purity of Monoclonal Anti-MMAF specific Antibody, Rabbit IgG (1M1G10) (Cat. No. MMF-MY2213) is more than 90% and the molecular weight of this protein is around 135-165 kDa verified by SEC-MALS. [Report](#)



Serial dilutions of MMAF were added into Monoclonal Anti-MMAF specific Antibody, Rabbit IgG (1M1G10) (Cat. No. MMF-MY2213): IgG1-MMAF binding reactions. The half maximal inhibitory concentration (IC<sub>50</sub>) is 0.1106  $\mu\text{g/mL}$  (Routinely tested).

Background

Monomethyl auristatin F (MMAF) is a potent mitotic inhibitor that inhibits tubulin polymerization. MMAF is widely used as a cytotoxic component of antibody-drug conjugates (ADCs) to treat several cancer types. Anti-MMAF antibody is a rabbit monoclonal antibody specifically reacts with MMAF without MMAE, which is more sensitive than mouse antibody. The anti-MMAF antibody is a useful reagent in PK assay to determine conjugated antibodies.

Clinical and Translational Updates

