



Source

Monoclonal Anti-MMAE specific Antibody, Rabbit IgG (M1H09) is a Rabbit monoclonal antibody recombinantly expressed from HEK293 cells.

Clone

M1H09

Species

Rabbit

Isotype

Rabbit IgG | Rabbit Kappa

Conjugate

Unconjugated

Antibody Type

Recombinant Monoclonal

Immunogen

MMAE-BSA.

Specificity

Specifically recognizes MMAE, no recrecognizes MMAF.

Application

Application	Recommended Usage
ELISA	0.06-125 ng/mL

Cross Verification

This product No cross-reactivity in ELISA with
Trastuzumab Deruxtecan.
Trastuzumab-DM1.
Trastuzumab Biosimilar.
ADC-MMAF.

Purity

>90% as determined by SDS-PAGE.
>90% as determined by SEC-MALS.

Purification

Protein A purified / Protein G purified

Formulation

Lyophilized from 0.22 µm filtered solution in PBS, pH7.4 with trehalose as protectant.

Contact us for customized product form or formulation.

Reconstitution

Please see Certificate of Analysis for specific instructions.

For best performance, we strongly recommend you to follow the reconstitution protocol provided in the CoA.

Storage

For long term storage, the product should be stored at lyophilized state at -20°C or lower.

Please avoid repeated freeze-thaw cycles.

This product is stable after storage at:

- -20°C to -70°C for 12 months in lyophilized state;
- -70°C for 3 months under sterile conditions after reconstitution.

SDS-PAGE

SEC-MALS

Discounts, Gifts,
and more!

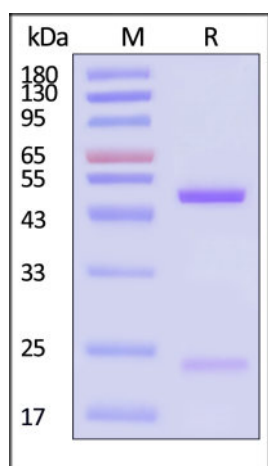


Monoclonal Anti-MMAE specific Antibody, Rabbit IgG (M1H09) (MALS verified)

Catalog # MME-MY2209

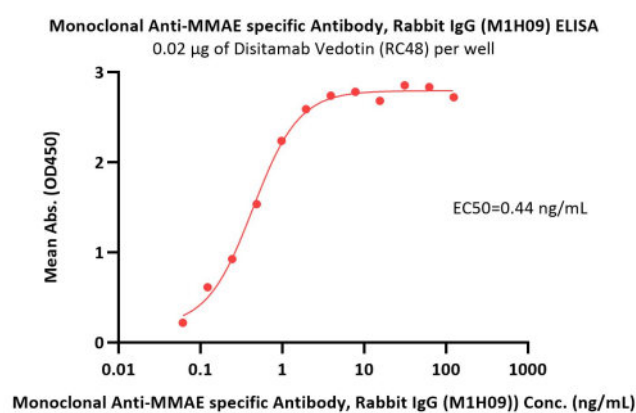


BIOSYSTEMS
Acro

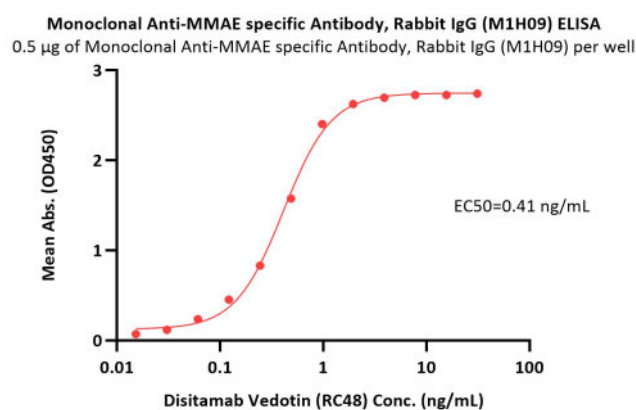


Monoclonal Anti-MMAE specific Antibody, Rabbit IgG (M1H09) on SDS-PAGE under reducing (R) condition. The gel was stained with Coomassie Blue. The purity of the protein is greater than 90% (With [Star Ribbon Pre-stained Protein Marker](#)).

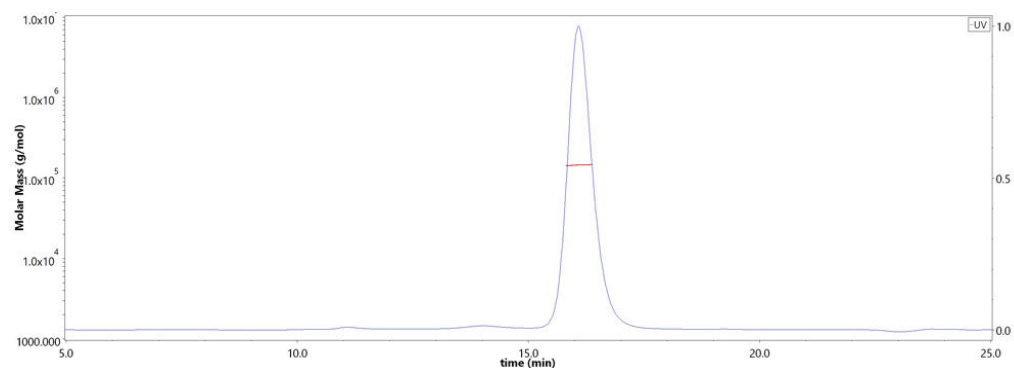
Bioactivity-ELISA



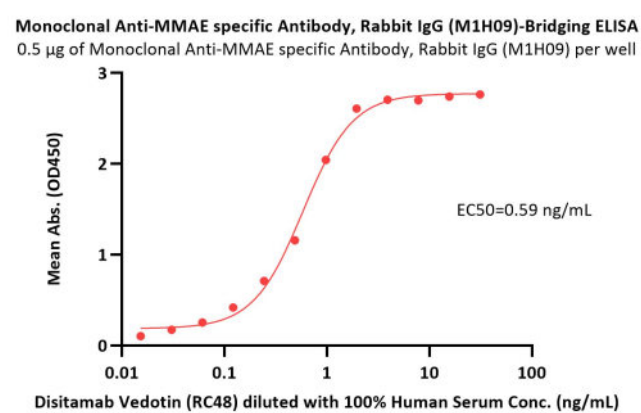
Immobilized Disitamab Vedotin (RC48) at 0.2 µg/mL (100 µL/well) can bind Monoclonal Anti-MMAE specific Antibody, Rabbit IgG (M1H09) (Cat. No. MME-MY2209) with a linear range of 0.06-1 ng/mL (QC tested).



Immobilized Monoclonal Anti-MMAE specific Antibody, Rabbit IgG (M1H09) (Cat. No. MME-MY2209) at 5 µg/mL, add Disitamab Vedotin (RC48) in the 100% Human Serum and then add Biotinylated Human Her2, His,Avitag, premium grade (Cat. No. HE2-H82E2) at 0.5 µg/mL. Detection was performed using HRP-conjugated Streptavidin (Acro, Cat. No. STN-NH913) (Routinely tested).



The purity of Monoclonal Anti-MMAE specific Antibody, Rabbit IgG (M1H09) (Cat. No. MME-MY2209) is more than 90% and the molecular weight of this protein is around 135-165 kDa verified by SEC-MALS. [Report](#)



Immobilized Monoclonal Anti-MMAE specific Antibody, Rabbit IgG (M1H09) (Cat. No. MME-MY2209) at 5 µg/mL, add Disitamab Vedotin (RC48) in the 100% Human Serum and then add Biotinylated Human Her2, His,Avitag, premium grade (Cat. No. HE2-H82E2) at 0.5 µg/mL. Detection was performed using HRP-conjugated Streptavidin (Acro, Cat. No. STN-NH913) (QC tested).

Discounts, Gifts,
and more!





Background

Monomethyl auristatin E (MMAE) is a synthetic derivative of dolastatin 10 and functions as a potent mitotic inhibitor by inhibiting tubulin polymerization. MMAE is widely used as a cytotoxic component of antibody-drug conjugates (ADCs) to treat several cancer types. Anti-MMAE antibody is a rabbit monoclonal antibody specially react with MMAE without MMAF, which is more sensitive than mouse antibody. The anti-MMAE antibody is a useful reagent in PK assay to determine conjugated antibodies.

Clinical and Translational Updates

Discounts, Gifts,
and more!

