



**Source**

Monoclonal Anti-MMAE specific Antibody, Rabbit IgG (M1H05) is a Rabbit monoclonal antibody recombinantly expressed from HEK293 cells.

**Clone**

M1H05

**Species**

Rabbit

**Isotype**

Rabbit IgG | Rabbit Kappa

**Conjugate**

Unconjugated

**Antibody Type**

Recombinant Monoclonal

**Immunogen**

MMAE-BSA.

**Specificity**

Specifically recognizes MMAE, no recrecognizes MMAF.

**Application**

Application	Recommended Usage
ELISA	0.03-31 ng/mL

**Cross Verification**

This product No cross-reactivity in ELISA with Trastuzumab Deruxtecan. Trastuzumab-DM1. Trastuzumab Biosimilar.

**Purity**

>90% as determined by SDS-PAGE.  
>90% as determined by SEC-MALS.

**Purification**

Protein A purified / Protein G purified

**Formulation**

Lyophilized from 0.22 µm filtered solution in PBS, pH7.4 with trehalose as protectant.

Contact us for customized product form or formulation.

**Reconstitution**

Please see Certificate of Analysis for specific instructions.

*For best performance, we strongly recommend you to follow the reconstitution protocol provided in the CoA.*

**Storage**

For long term storage, the product should be stored at lyophilized state at -20°C or lower.

*Please avoid repeated freeze-thaw cycles.*

This product is stable after storage at:

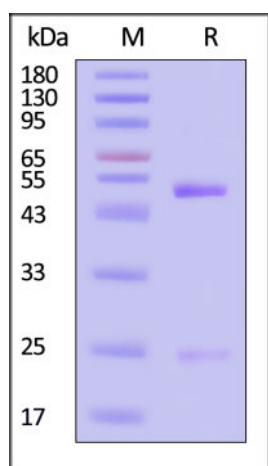
- -20°C to -70°C for 12 months in lyophilized state;
- -70°C for 3 months under sterile conditions after reconstitution.

**SDS-PAGE**

**SEC-MALS**

Discounts, Gifts, and more!

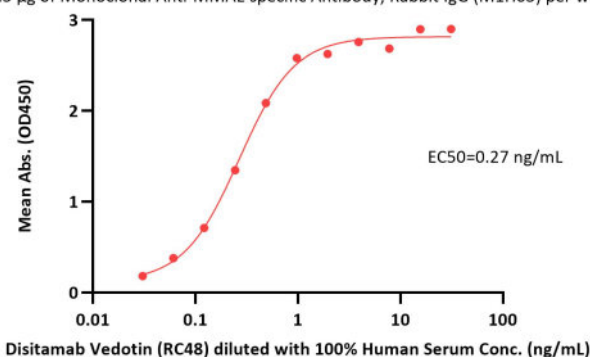




Monoclonal Anti-MMAE specific Antibody, Rabbit IgG (M1H05) on SDS-PAGE under reducing (R) condition. The gel was stained with Coomassie Blue. The purity of the protein is greater than 90% (With [Star Ribbon Pre-stained Protein Marker](#)).

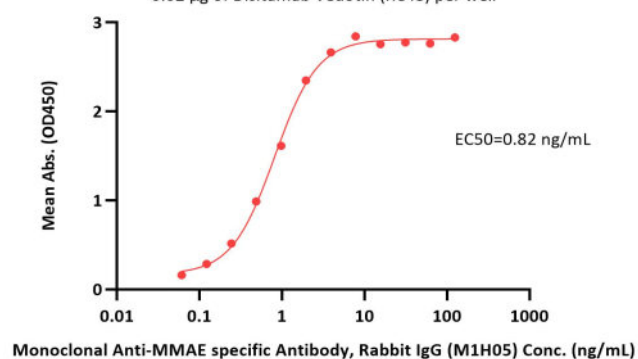
### Bioactivity-ELISA

Monoclonal Anti-MMAE specific Antibody, Rabbit IgG (M1H05)-Bridging ELISA  
0.5 µg of Monoclonal Anti-MMAE specific Antibody, Rabbit IgG (M1H05) per well

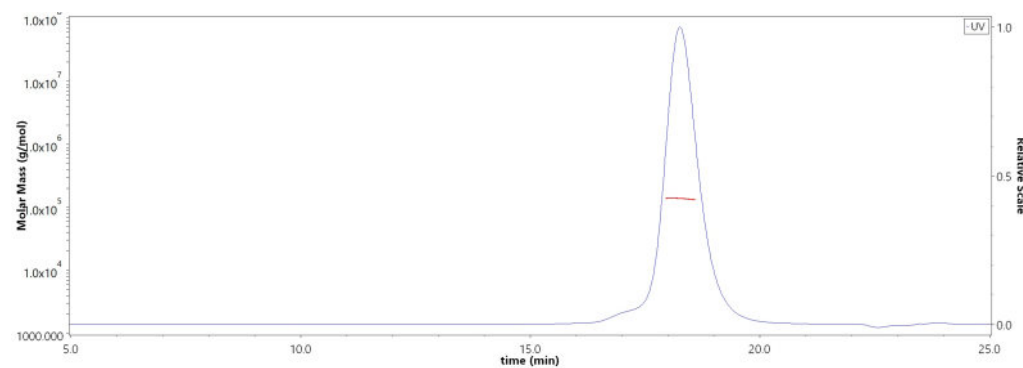


Immobilized Monoclonal Anti-MMAE specific Antibody, Rabbit IgG (M1H05) (Cat. No. MME-MY2198a) at 5 µg/mL, add Disitamab Vedotin (RC48) in the 100% Human Serum and then add Biotinylated Human Her2, His,Avitag, premium grade (Cat. No. HE2-H82E2) at 0.5 µg/mL. Detection was performed using HRP-conjugated Streptavidin (Acro, Cat. No. STN-NH913) (QC tested).

Monoclonal Anti-MMAE specific Antibody, Rabbit IgG (M1H05) ELISA  
0.02 µg of Disitamab Vedotin (RC48) per well

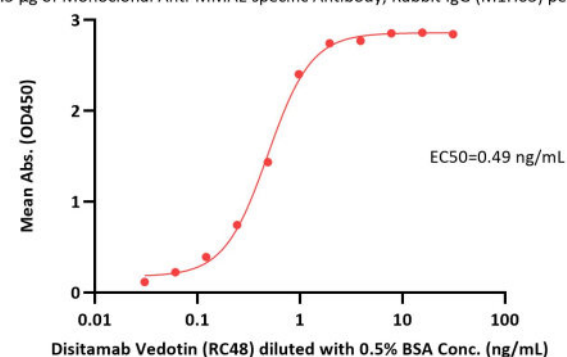


Immobilized Disitamab Vedotin (RC48) at 0.2 µg/mL (100 µL/well) can bind Monoclonal Anti-MMAE specific Antibody, Rabbit IgG (M1H05) (Cat. No. MME-MY2198a) with a linear range of 0.06-2 ng/mL (Routinely tested).



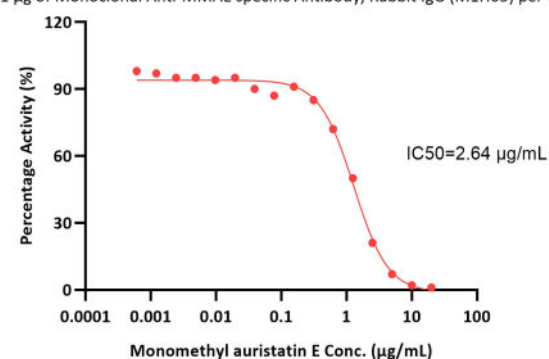
The purity of Monoclonal Anti-MMAE specific Antibody, Rabbit IgG (M1H05) (Cat. No. MME-MY2198a) is more than 90% and the molecular weight of this protein is around 135-165 kDa verified by SEC-MALS. [Report](#)

Monoclonal Anti-MMAE specific Antibody, Rabbit IgG (M1H05)-Bridging ELISA  
0.5 µg of Monoclonal Anti-MMAE specific Antibody, Rabbit IgG (M1H05) per well



Immobilized Monoclonal Anti-MMAE specific Antibody, Rabbit IgG (M1H05) (Cat. No. MME-MY2198a) at 5 µg/mL, add Disitamab Vedotin (RC48) in the 0.5% BSA and then add Biotinylated Human Her2, His,Avitag, premium grade (Cat. No. HE2-H82E2) at 0.5 µg/mL. Detection was performed using HRP-conjugated Streptavidin (Acro, Cat. No. STN-NH913) (Routinely tested).

Inhibition of Monoclonal Anti-MMAE specific Antibody, Rabbit IgG (M1H05) ELISA  
0.1 µg of Monoclonal Anti-MMAE specific Antibody, Rabbit IgG (M1H05) per well



Serial dilutions of Monomethyl auristatin E were added into Monoclonal Anti-MMAE specific Antibody, Rabbit IgG (M1H05) (Cat. No. MME-MY2198a): Disitamab Vedotin (RC48) binding reactions. The half maximal inhibitory concentration (IC<sub>50</sub>) is 2.642 µg/mL (Routinely tested).

### Background

Discounts, Gifts,  
and more!



# Monoclonal Anti-MMAE specific Antibody, Rabbit IgG (M1H05) (MALS verified)

Catalog # MME-MY2198a



Monomethyl auristatin E (MMAE) is a synthetic derivative of dolastatin 10 and functions as a potent mitotic inhibitor by inhibiting tubulin polymerization. MMAE is widely used as a cytotoxic component of antibody-drug conjugates (ADCs) to treat several cancer types. Anti-MMAE antibody is a rabbit monoclonal antibody. The anti-MMAE antibody is a useful reagent in PK assay to determine conjugated antibodies.

## Clinical and Translational Updates

Discounts, Gifts,  
and more!



[www.acrobiosystems.com](http://www.acrobiosystems.com)