

**Synonym**

LILRB2,ILT4,LIR2,MIR10,CD85d

**Source**

Human LILRB2, His Tag(LI2-H5220) is expressed from human 293 cells (HEK293). It contains AA Gln 22 - Val 461 (Accession # [AAH36827](#)).

Predicted N-terminus: Gln 22

**Molecular Characterization**

LILRB2(Gln 22 - Val 461) AAH36827	Poly-his
--------------------------------------	----------

This protein carries a polyhistidine tag at the C-terminus

The protein has a calculated MW of 48.6 kDa. The protein migrates as 58-67 kDa under reducing (R) condition (SDS-PAGE) due to glycosylation.

**Endotoxin**

Less than 1.0 EU per µg by the LAL method.

**Purity**

>95% as determined by SDS-PAGE.

>90% as determined by SEC-MALS.

**Formulation**

Lyophilized from 0.22 µm filtered solution in PBS, pH7.4 with trehalose as protectant.

Contact us for customized product form or formulation.

**Reconstitution**

Please see Certificate of Analysis for specific instructions.

*For best performance, we strongly recommend you to follow the reconstitution protocol provided in the CoA.*

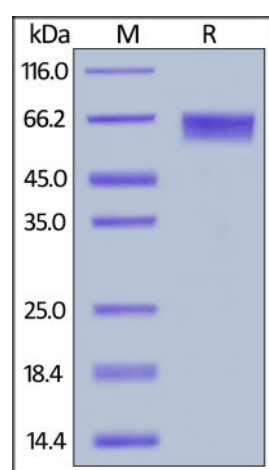
**Storage**

For long term storage, the product should be stored at lyophilized state at -20°C or lower.

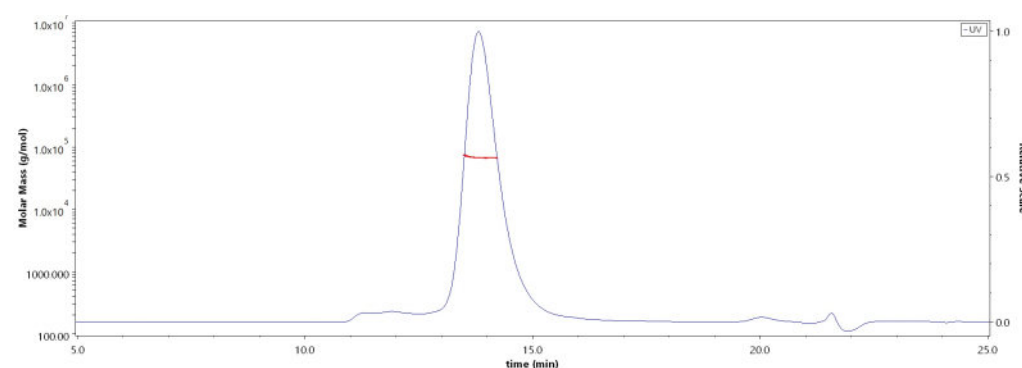
*Please avoid repeated freeze-thaw cycles.*

This product is stable after storage at:

- -20°C to -70°C for 12 months in lyophilized state;
- -70°C for 3 months under sterile conditions after reconstitution.

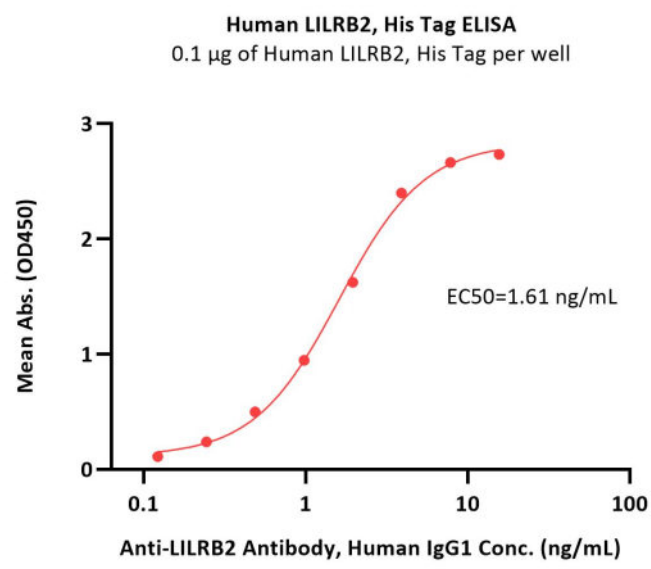
**SDS-PAGE**

Human LILRB2, His Tag on SDS-PAGE under reducing (R) condition. The gel was stained with Coomassie Blue. The purity of the protein is greater than 95%.

**Bioactivity-ELISA****SEC-MALS**

The purity of Human LILRB2, His Tag (Cat. No. LI2-H5220) is more than 90% and the molecular weight of this protein is around 58-78 kDa verified by SEC-MALS.

[Report](#)



Immobilized Human LILRB2, His Tag (Cat. No. LI2-H5220) at 1 µg/mL (100 µL/well) can bind Anti-LILRB2 Antibody, Human IgG1 with a linear range of 0.5-4 ng/mL (QC tested).

## Background

Leukocyte immunoglobulin-like receptor subfamily B member 2 (LILRB2) is also known as CD85 antigen-like family member D (CD85d), Immunoglobulin-like transcript 4 (ILT-4), Monocyte / macrophage immunoglobulin-like receptor 10 (MIR-10), which is a member of the the subfamily B class of LIR receptors. LILRB2 is receptor for class I MHC antigens. LILRB2 recognizes a broad spectrum of HLA-A, HLA-B, HLA-C and HLA-G alleles. LILRB2 competes with CD8A for binding to class I MHC antigens. LILRB2 / CD85d inhibits FCGR1A-mediated phosphorylation of cellular proteins and mobilization of intracellular calcium ions.

## Clinical and Translational Updates

Please contact us via [TechSupport@acrobiosystems.com](mailto:TechSupport@acrobiosystems.com) if you have any question on this product.