



## Product Details

Laminin 411 is a key component of the basement membrane and is involved in the regulation of cell differentiation. Laminin 411 fragment consists of the C-terminal end of the alpha 4, beta 1, and gamma 1 chains.

## Key parameter

<b>Purity (SDS PAGE)</b>	> 90%
<b>Mycoplasma Test</b>	Negative
<b>Sterility Test</b>	Negative
<b>Endotoxin Test</b>	< 0.1 EU per µg

## Reconstitution

Please see Certificate of Analysis for specific instructions.

*For best performance, we strongly recommend you to follow the reconstitution protocol provided in the CoA.*

## Formulation

Lyophilized from 0.22 µm filtered solution in PBS, pH7.4 with trehalose as protectant.

Contact us for customized product form or formulation.

## Storage

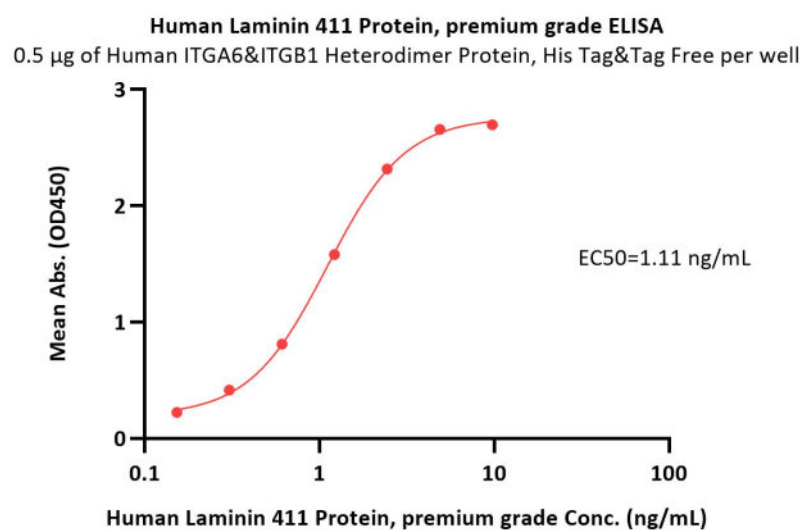
For long term storage, the product should be stored at lyophilized state at -20°C or lower.

*Please avoid repeated freeze-thaw cycles.*

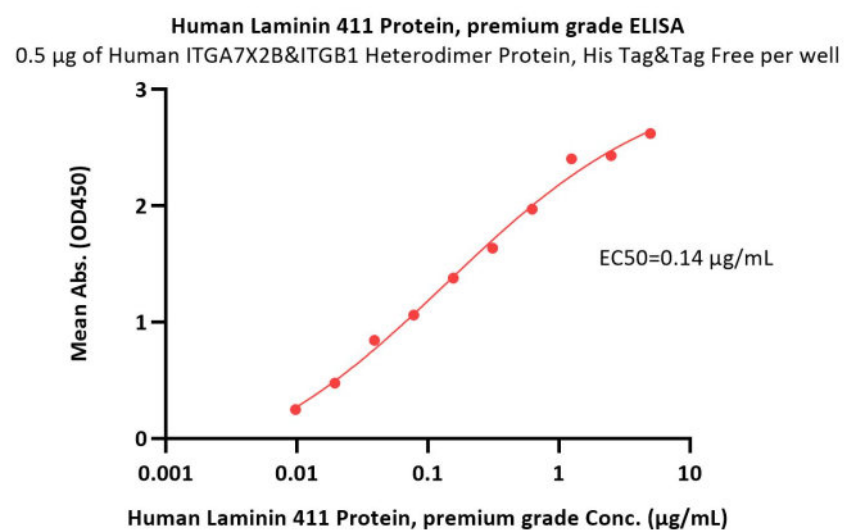
This product is stable after storage at:

- -20°C to -70°C for 24 months in lyophilized state;
- -70°C for 12 months under sterile conditions after reconstitution;
- 2-8°C for 3 months under sterile conditions after reconstitution.

## Bioactivity-ELISA



Immobilized Human ITGA6&ITGB1 Heterodimer Protein, His Tag&Tag Free (Cat. No. IT1-H52W7) at 5 µg/mL (100 µL/well) can bind Human Laminin



Immobilized Human ITGA7X2B&ITGB1 Heterodimer Protein, His Tag&Tag Free (Cat. No. IT1-H52W8) at 5 µg/mL (100 µL/well) can bind Human

Discounts, Gifts,  
and more!



# Human Laminin 411 Protein, premium grade

Catalog # LAT-H5263

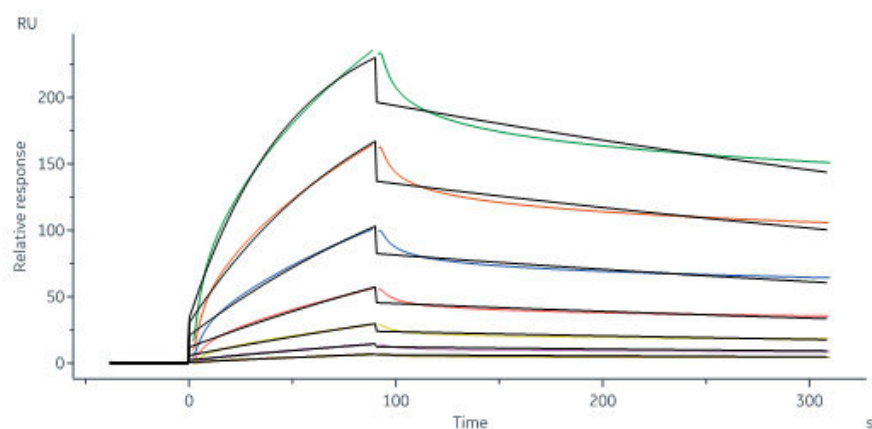


BIOSYSTEMS  
**Acro**

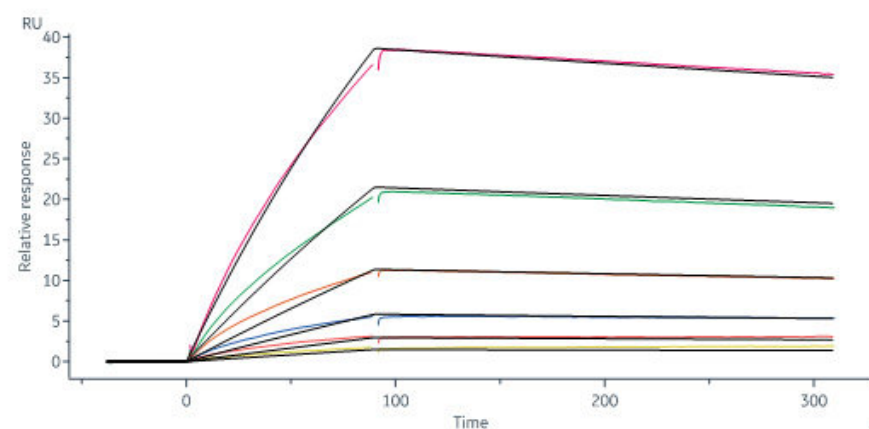
411 Protein, premium grade (Cat. No. LAT-H5263) with a linear range of 0.1-2 ng/mL (QC tested).

Laminin 411 Protein, premium grade (Cat. No. LAT-H5263) with a linear range of 0.01-0.625  $\mu$ g/mL (Routinely tested).

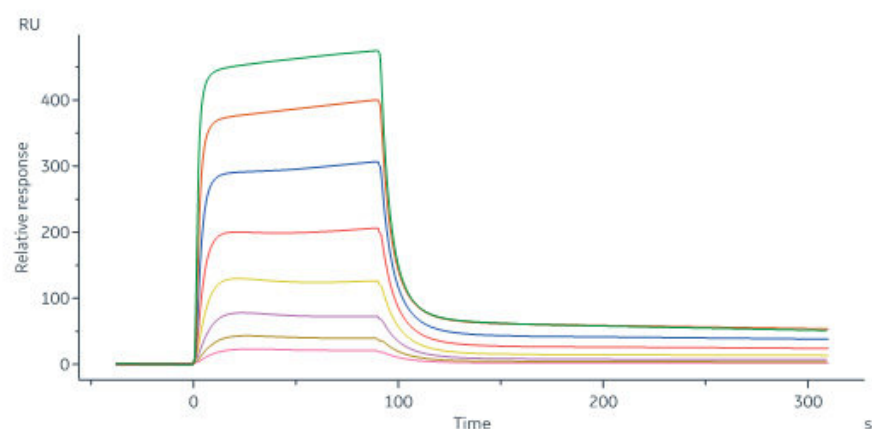
## Bioactivity-SPR



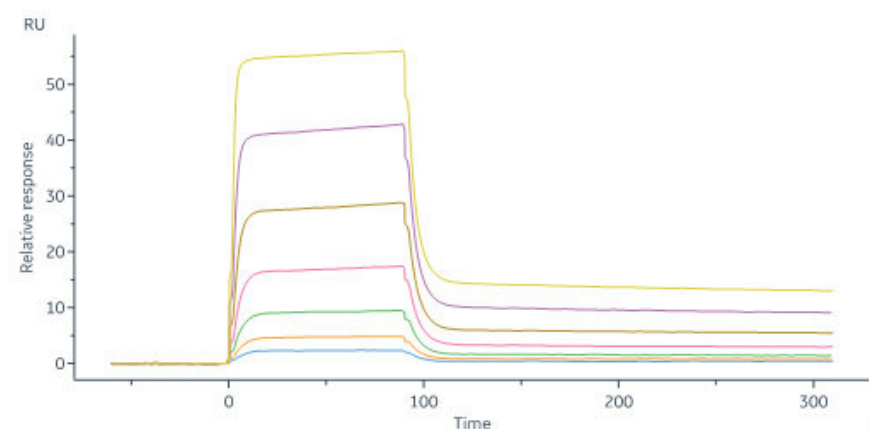
Human Laminin 411 Protein, premium grade (Cat. No. LAT-H5263) immobilized on CM5 Chip can bind Human ITGA6&ITGB1 Heterodimer Protein, His Tag&Tag Free (Cat. No. IT1-H52W7) with an affinity constant of 29.3 nM as determined in a SPR assay (Biacore 8K) (QC tested).



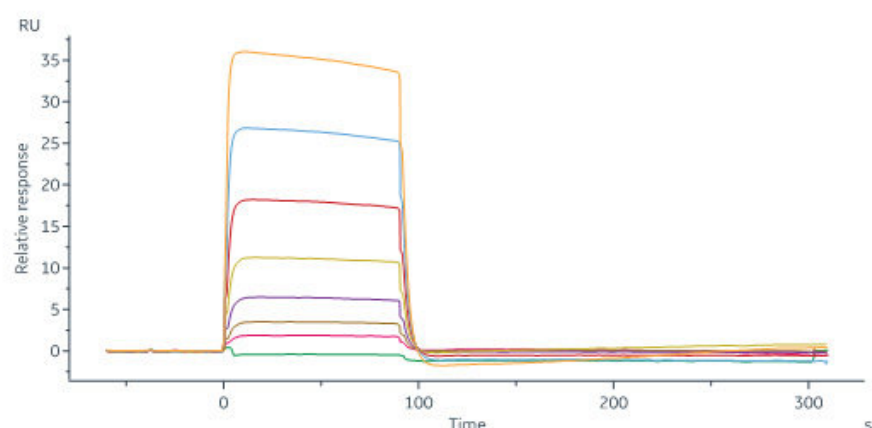
Human Laminin 411 Protein, premium grade (Cat. No. LAT-H5263) immobilized on CM5 Chip can bind Human ITGA7X2B&ITGB1 Heterodimer Protein, His Tag&Tag Free (Cat. No. IT1-H52W8) with an affinity constant of 17.4 nM as determined in a SPR assay (Biacore 8K) (Routinely tested).



Human MCAM, His Tag (Cat. No. CD6-H5229) immobilized on CM5 Chip can bind Human Laminin 411 Protein, premium grade (Cat. No. LAT-H5263) with an affinity constant of 0.115  $\mu$ M as determined in a SPR assay (Biacore 8K) (Routinely tested).



Human MCAM, His Tag (Cat. No. CD6-H5229) captured on CM5 chip via anti-His antibody can bind Human Laminin 411 Protein, premium grade (Cat. No. LAT-H5263) with an affinity constant of 27.9 nM as determined in a SPR assay (Biacore 8K) (Routinely tested).



Human Laminin 411 Protein, premium grade (Cat. No. LAT-H5263) captured on Protein A Chip can bind Human MCAM, His Tag (Cat. No. CD6-H5229) with an affinity constant of 107 nM as determined in a SPR assay (Biacore 8K) (Routinely tested).

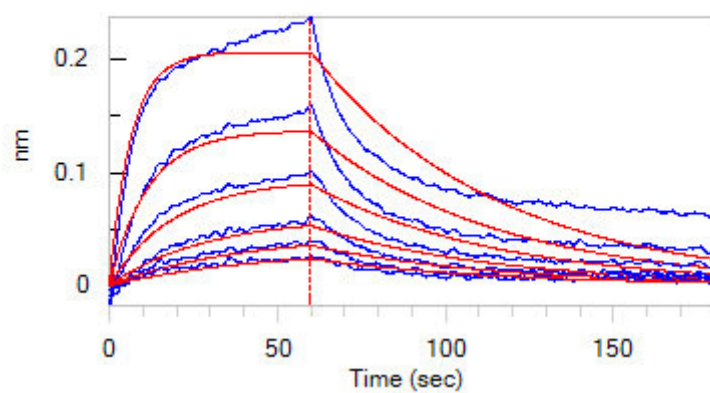
Discounts, Gifts,  
and more!



[www.acrobiosystems.com](http://www.acrobiosystems.com)



## Bioactivity-BLI



Loaded Human Laminin 411 Protein, premium grade (Cat. No. LAT-H5263) on Protein A Biosensor, can bind Human ITGA6&ITGB1 Heterodimer Protein, His Tag&Tag Free (Cat. No. IT1-H52W7) with an affinity constant of 26.9 nM as determined in BLI assay (ForteBio Octet Red96e) (QC tested).

## Clinical and Translational Updates

Discounts, Gifts,  
and more!

