



Synonym

LAG3,CD223,FDC

Source

Human LAG-3, Fc Tag(LA3-H5255) is expressed from human 293 cells (HEK293). It contains AA Leu 23 - Leu 450 (Accession # [P18627-1](#)).

Predicted N-terminus: Leu 23

Molecular Characterization

LAG-3(Leu 23 - Leu 450) P18627-1	Fc(Glu 99 - Lys 330) P01857
-------------------------------------	--------------------------------

This protein carries a human IgG1 Fc tag at the C-terminus.

The protein has a calculated MW of 72.8 kDa. The protein migrates as 80-90 kDa under reducing (R) condition (SDS-PAGE) due to glycosylation.

Endotoxin

Less than 1.0 EU per µg by the LAL method.

Purity

>95% as determined by SDS-PAGE.

>95% as determined by SEC-MALS.

Formulation

Lyophilized from 0.22 µm filtered solution in Tris with Glycine, Arginine and NaCl, pH7.5 with trehalose as protectant.

Contact us for customized product form or formulation.

Reconstitution

Please see Certificate of Analysis for specific instructions.

For best performance, we strongly recommend you to follow the reconstitution protocol provided in the CoA.

Storage

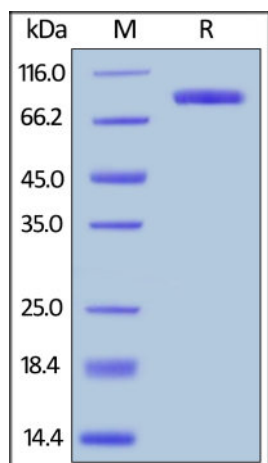
For long term storage, the product should be stored at lyophilized state at -20°C or lower.

Please avoid repeated freeze-thaw cycles.

This product is stable after storage at:

- -20°C to -70°C for 12 months in lyophilized state;
- -70°C for 3 months under sterile conditions after reconstitution.

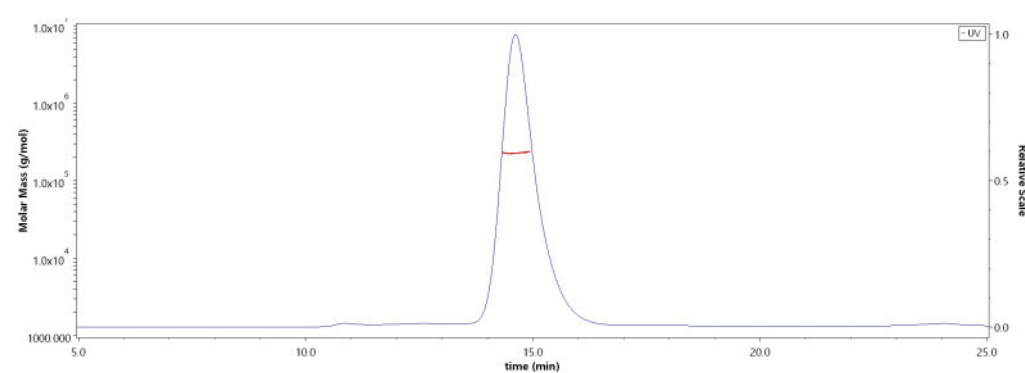
SDS-PAGE



Human LAG-3, Fc Tag on SDS-PAGE under reducing (R) condition. The gel was stained with Coomassie Blue. The purity of the protein is greater than 95%.

Bioactivity-ELISA

SEC-MALS

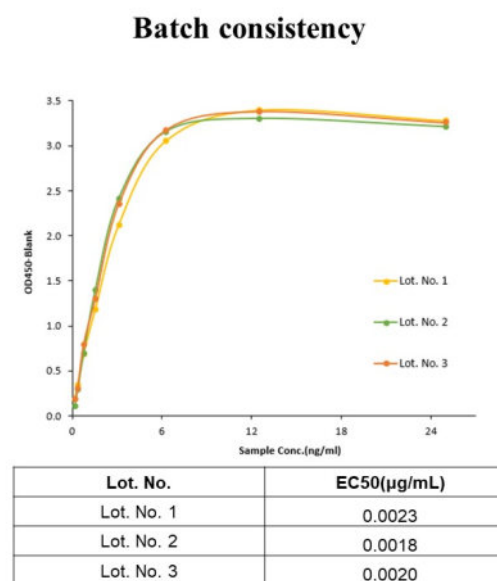
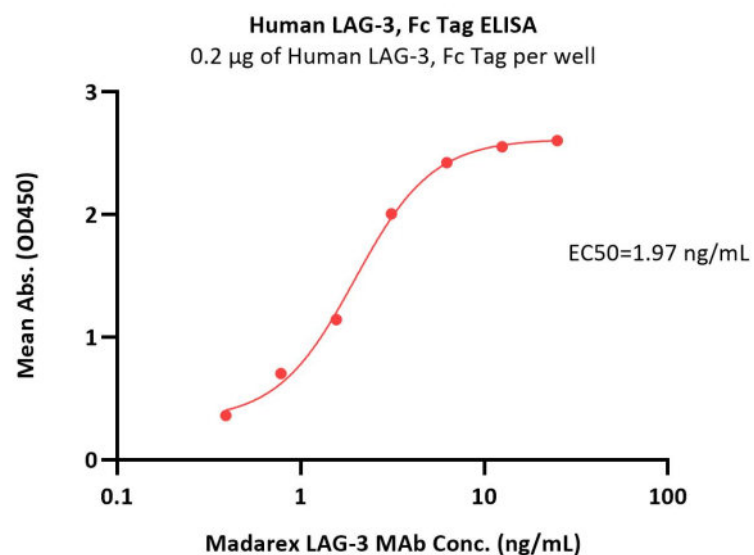


The purity of Human LAG-3, Fc Tag (Cat. No. LA3-H5255) is more than 95% and the molecular weight of this protein is around 215-240 kDa verified by SEC-MALS.

[Report](#)

Discounts, Gifts,
and more!





Immobilized Human LAG-3, Fc Tag (Cat. No. LA3-H5255) at 2 µg/mL (100 µL/well) can bind Madarex LAG-3 MAb with a linear range of 0.4-3 ng/mL (QC tested).

Background

Lymphocyte activation gene 3 protein (LAG3) is also known as CD antigen CD223 and protein FDC, which belongs to immunoglobulin (Ig) superfamily and contains 4 extracellular Ig-like domains. The LAG3 gene contains 8 exons. The sequence data, exon/intron organization, and chromosomal localization all indicate a close relationship of LAG3 to CD4. LAG3 /CD223 involved in lymphocyte activation. LAG3 /CD223 binds to HLA class-II antigens.

Clinical and Translational Updates

Discounts, Gifts,
and more!

