



Synonym

LAIR1,CD305

Source

Mouse LAIR1 Protein, Mouse IgG2a Fc Tag(LA1-M5254) is expressed from human 293 cells (HEK293). It contains AA Gln 22 - Tyr 141 (Accession # [Q8BG84-1](#)).

Predicted N-terminus: Gln 22

Molecular Characterization

LAIR-1(Gln 22 - Tyr 141) Q8BG84-1	mFc(Glu 98 - Lys 330) P01863
--------------------------------------	---------------------------------

This protein carries a mouse IgG2a Fc tag at the C-terminus.

The protein has a calculated MW of 40.6 kDa. The protein migrates as 50-66 kDa under reducing (R) condition (SDS-PAGE) due to glycosylation.

Endotoxin

Less than 0.1 EU per µg by the LAL method.

Purity

>95% as determined by SDS-PAGE.

Formulation

Lyophilized from 0.22 µm filtered solution in 50 mM Tris, 100 mM Glycine, pH7.5 with trehalose as protectant.

Contact us for customized product form or formulation.

Reconstitution

Please see Certificate of Analysis for specific instructions.

For best performance, we strongly recommend you to follow the reconstitution protocol provided in the CoA.

Storage

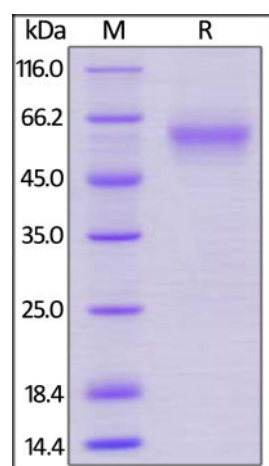
For long term storage, the product should be stored at lyophilized state at -20°C or lower.

Please avoid repeated freeze-thaw cycles.

This product is stable after storage at:

- -20°C to -70°C for 12 months in lyophilized state;
- -70°C for 3 months under sterile conditions after reconstitution.

SDS-PAGE

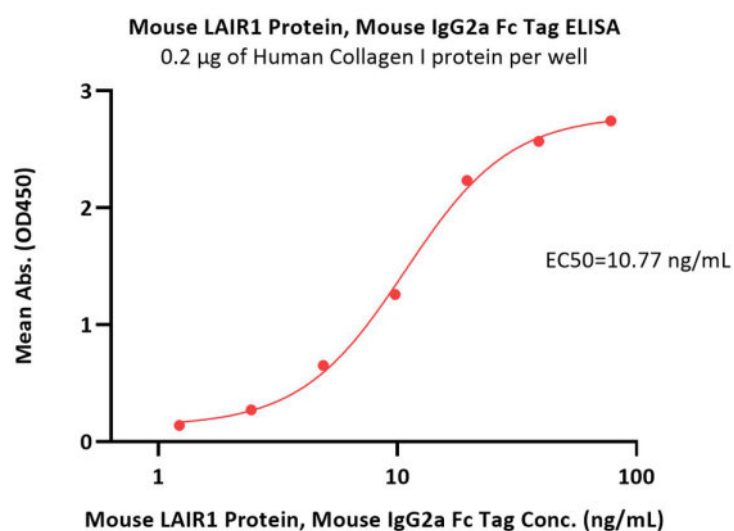


Mouse LAIR1 Protein, Mouse IgG2a Fc Tag on SDS-PAGE under reducing (R) condition. The gel was stained with Coomassie Blue. The purity of the protein is greater than 95%.

Bioactivity-ELISA

Discounts, Gifts,
and more!





Immobilized Human Collagen I protein at 2 µg/mL (100 µL/well) can bind Mouse LAIR1 Protein, Mouse IgG2a Fc Tag (Cat. No. LA1-M5254) with a linear range of 1-20 ng/mL (QC tested).

Background

Leukocyte-associated immunoglobulin-like receptor-1 (LAIR-1) is constitutively expressed on the majority of human peripheral blood mononuclear leukocytes. LAIR-1 or CD305 is a transmembrane glycoprotein with a single immunoglobulin-like domain and a cytoplasmic tail containing two immune receptor tyrosine-based inhibitory motifs. LAIR-1 recruits SHP-1 and SHP-2 phosphatases upon activation, and cross-linking of the LAIR-1 antigen on natural killer (NK) cells results in strong inhibition of NK cell-mediated cytotoxicity.

Functions as an inhibitory receptor that plays a constitutive negative regulatory role on cytolytic function of natural killer (NK) cells, B-cells and T-cells. Activation by Tyr phosphorylation results in recruitment and activation of the phosphatases PTPN6 and PTPN11. It also reduces the increase of intracellular calcium evoked by B-cell receptor ligation. Diseases associated with LAIR1 include Chronic Active Epstein-Barr Virus Infection and Palindromic Rheumatism.

Clinical and Translational Updates

Discounts, Gifts,
and more!

