



Background

PSMA is transmembrane glycoprotein belonging to the M28 peptidase family. The protein acts as a glutamate carboxypeptidase on different alternative substrates, including the nutrient folate and the neuropeptide N-acetyl-l-aspartyl-l-glutamate and is expressed in a number of tissues such as prostate, central and peripheral nervous system and kidney.

Host Species

Rabbit

Clone

9A2

Application

IHC

Property

1: 1000

State

Liquid

Positive Control

Human Prostate Tissue

Clonality

Monoclonal

Synonym

PSMA

Research Field

Cancer Drug Targets

Source

Rabbit

Isotype

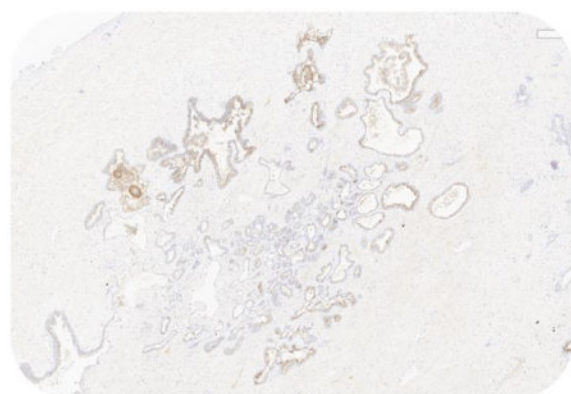
IgG

Storage

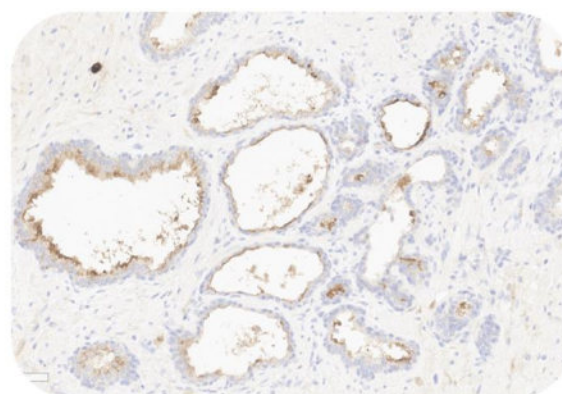
Shipped at 4°C. Store at +4°C short term (1-2 weeks). Upon delivery aliquot. Store at -20°C long term. Avoid freeze / thaw cycle.

Typical Data

Control Sample



Immunohistochemistry (Formalin/PFA-fixed paraffin-embedded sections) -Recombinant Monoclonal Anti-PSMA Antibody, Rabbit (9A2) (HGS-S317)
Human Prostate Tissue, 4X



Immunohistochemistry (Formalin/PFA-fixed paraffin-embedded sections) -Recombinant Monoclonal Anti-PSMA Antibody, Rabbit (9A2) (HGS-S317)
Human Prostate Tissue, 4X

Immunohistochemical analysis of paraffin embedded Human Prostate Tissue labelled with HGS-S317 at 1/1000 dilution.

Perform heat mediated antigen retrieval with Tris/EDTA buffer pH 9.0 before commencing with IHC staining protocol.

Cancer Sample

Discounts, Gifts,
and more!

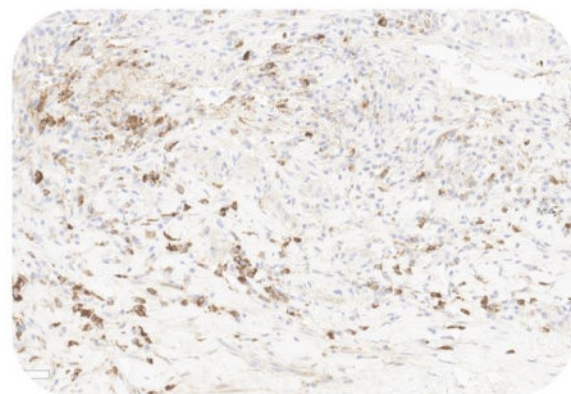


Recombinant Monoclonal Anti-PSMA Antibody, Rabbit (9A2)

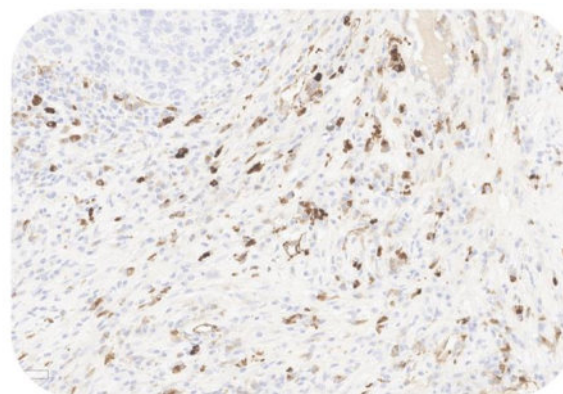
Catalog # HGS-S317



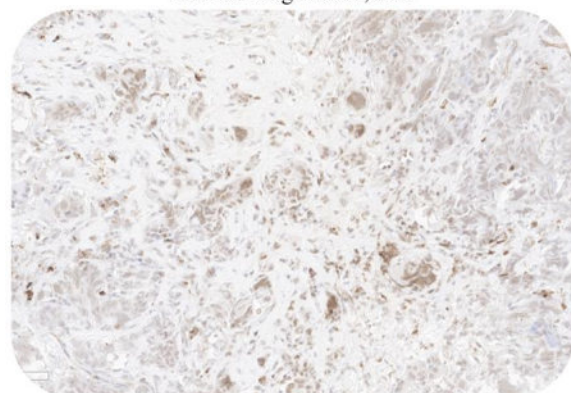
BIOSYSTEMS
Acro



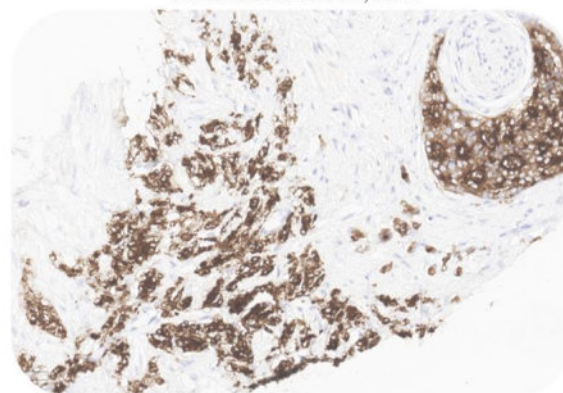
Immunohistochemistry (Formalin/PFA-fixed paraffin-embedded sections) -Recombinant Monoclonal Anti-PSMA Antibody, Rabbit (9A2) (HGS-S317)
Human Lung Cancer, 20X



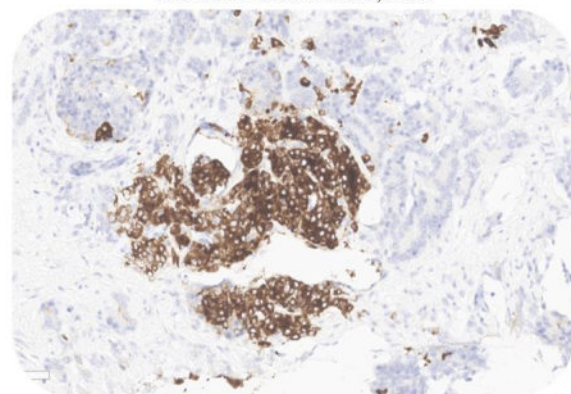
Immunohistochemistry (Formalin/PFA-fixed paraffin-embedded sections) -Recombinant Monoclonal Anti-PSMA Antibody, Rabbit (9A2) (HGS-S317)
Human Liver Cancer, 20X



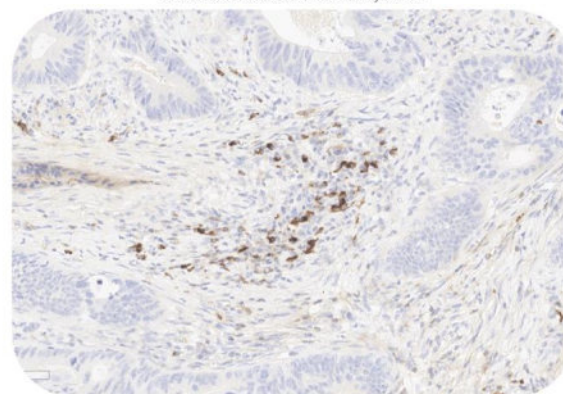
Immunohistochemistry (Formalin/PFA-fixed paraffin-embedded sections) -Recombinant Monoclonal Anti-PSMA Antibody, Rabbit (9A2) (HGS-S317)
Human Ovarian Cancer, 20X



Immunohistochemistry (Formalin/PFA-fixed paraffin-embedded sections) -Recombinant Monoclonal Anti-PSMA Antibody, Rabbit (9A2) (HGS-S317)
Human Prostate cancer, 20X



Immunohistochemistry (Formalin/PFA-fixed paraffin-embedded sections) -Recombinant Monoclonal Anti-PSMA Antibody, Rabbit (9A2) (HGS-S317)
Human Prostate cancer, 20X



Immunohistochemistry (Formalin/PFA-fixed paraffin-embedded sections) -Recombinant Monoclonal Anti-PSMA Antibody, Rabbit (9A2) (HGS-S317)
Human Colorectal Cancer, 20X

Immunohistochemical analysis of paraffin embedded human cancer tissue labelled with HGS-S317 at 1/1000 dilution.

Perform heat mediated antigen retrieval with Tris/EDTA buffer pH 9.0 before commencing with IHC staining protocol.

Clinical and Translational Updates

Discounts, Gifts,
and more!



➤ www.acrobiosystems.com