



Background

Could play a role in phagocytic activities of tissue macrophages, both in intracellular lysosomal metabolism and extracellular cell-cell and cell-pathogen interactions. Binds to tissue- and organ-specific lectins or selectins, allowing homing of macrophage subsets to particular sites. Rapid recirculation of CD68 from endosomes and lysosomes to the plasma membrane may allow macrophages to crawl over selectin-bearing substrates or other cells.

Host Species

Rabbit

Clone

2D8

Application

IHC

Property

1: 1000

State

Liquid

Positive Control

Human Tonsil Tissues

Clonality

Monoclonal

Synonym

DKFZp686M18236, GP110, LAMP4, macrosialin, SCARD1

Research Field

Cancer Drug Targets

Source

Rabbit

Isotype

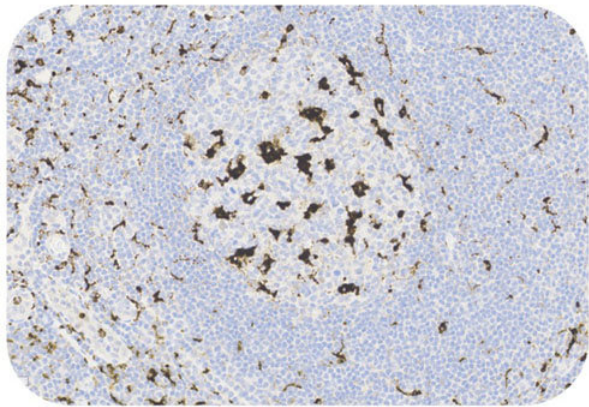
IgG

Storage

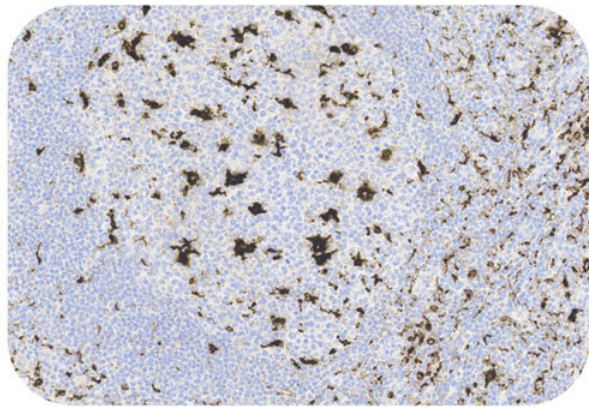
Shipped at 4°C. Store at +4°C short term (1-2 weeks). Upon delivery aliquot. Store at -20°C long term. Avoid freeze / thaw cycle.

Typical Data

Control Sample



Immunohistochemistry (Formalin/PFA-fixed paraffin-embedded sections) - Recombinant Monoclonal Anti-CD68 Antibody, Rabbit (2D8) (HGS-S262)
Human Tonsil Tissue, 20X



Immunohistochemistry (Formalin/PFA-fixed paraffin-embedded sections) - Recombinant Monoclonal Anti-CD68 Antibody, Rabbit (2D8) (HGS-S262)
Human Tonsil Tissue, 20X

Immunohistochemical analysis of paraffin embedded Human tonsil tissue labelled with HGS-S262 at 1/1000 dilution.

Perform heat mediated antigen retrieval with Tris/EDTA buffer pH 9.0 before commencing with IHC staining protocol.

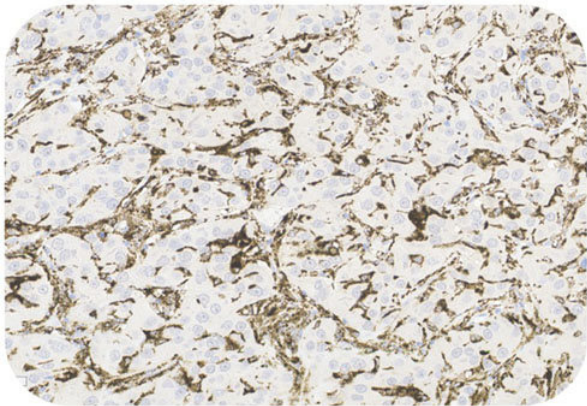
Cancer Sample

Discounts, Gifts,
and more!

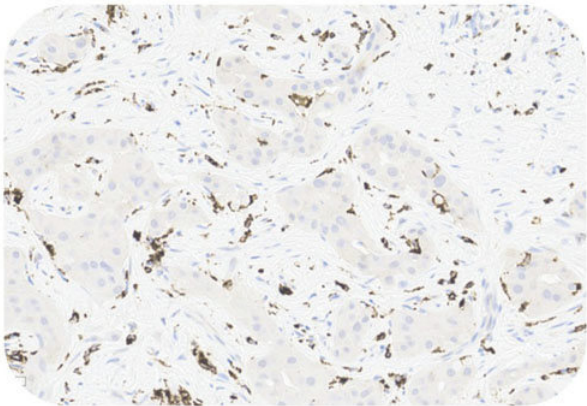


Recombinant Monoclonal Anti-CD68 Antibody, Rabbit (2D8)

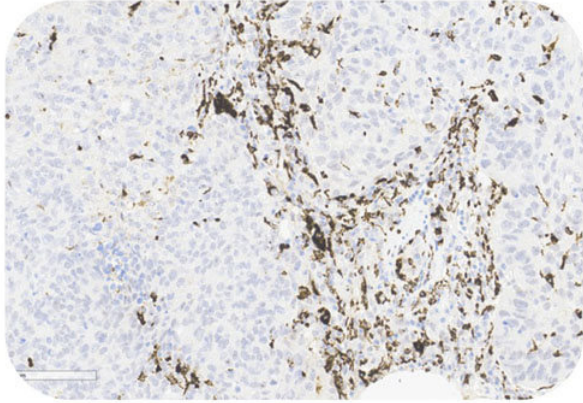
Catalog # HGS-S262



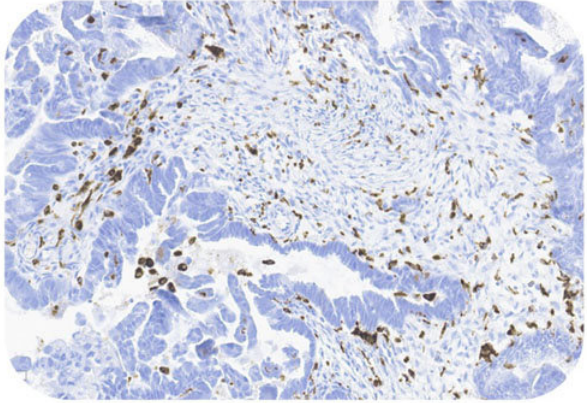
Immunohistochemistry (Formalin/PFA-fixed paraffin-embedded sections) - Recombinant Monoclonal Anti-CD68 Antibody, Rabbit (2D8) (HGS-S262)
Human Hepatocellular Carcinoma Tissue, 20X



Immunohistochemistry (Formalin/PFA-fixed paraffin-embedded sections) - Recombinant Monoclonal Anti-CD68 Antibody, Rabbit (2D8) (HGS-S262)
Human Hepatocellular Carcinoma Tissue, 20X



Immunohistochemistry (Formalin/PFA-fixed paraffin-embedded sections) - Recombinant Monoclonal Anti-CD68 Antibody, Rabbit (2D8) (HGS-S262)
Human Lung Cancer Tissue, 20X



Immunohistochemistry (Formalin/PFA-fixed paraffin-embedded sections) - Recombinant Monoclonal Anti-CD68 Antibody, Rabbit (2D8) (HGS-S262)
Human Ovarian Tissue, 20X

Immunohistochemical analysis of paraffin embedded human cancer tissue labelled with HGS-S262 at 1/1000 dilution.
Perform heat mediated antigen retrieval with Tris/EDTA buffer pH 9.0 before commencing with IHC staining protocol.

Clinical and Translational Updates

Discounts, Gifts,
and more!

