



Background

TROP2 is a member of a family including at least two type I membrane proteins. It transduces an intracellular calcium signal and acts as a cell surface receptor.

Host Species

Mouse

Clone

2A9

Application

IHC

Property

1: 1000

State

Liquid

Positive Control

Human Tonsil Tissue

Clonality

Monoclonal

Synonym

TROP2

Research Field

Cancer Drug Targets

Source

Mouse

Isotype

IgG

Storage

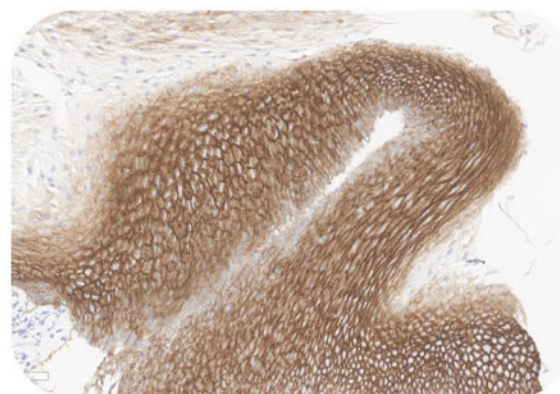
Shipped at 4°C. Store at +4°C short term (1-2 weeks). Upon delivery aliquot. Store at -20°C long term. Avoid freeze / thaw cycle.

Typical Data

Control Sample



Immunohistochemistry (Formalin/PFA-fixed paraffin-embedded sections) -Recombinant Monoclonal Anti-TROP2 Antibody, Mouse (2A9) (HCS-S310)
Human Tonsil Tissue, 4X



Immunohistochemistry (Formalin/PFA-fixed paraffin-embedded sections) -Recombinant Monoclonal Anti-TROP2 Antibody, Mouse (2A9) (HCS-S310)
Human Tonsil Tissue, 20X

Immunohistochemical analysis of paraffin embedded Human Tonsil Tissue labelled with HCS-S310 at 1/1000 dilution.

Perform heat mediated antigen retrieval with Tris/EDTA buffer pH 9.0 before commencing with IHC staining protocol.

Cancer Sample

Discounts, Gifts,
and more!

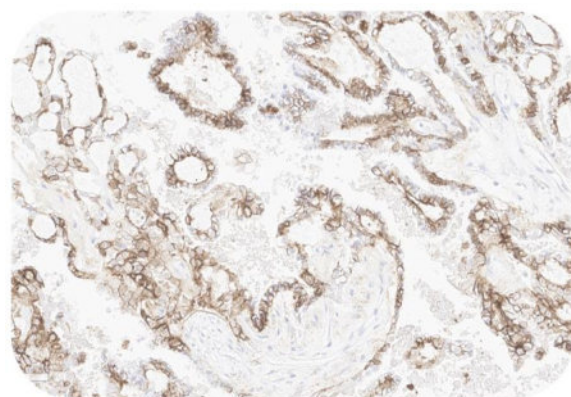


Recombinant Monoclonal Anti-TROP2 Antibody, Mouse (2A9)

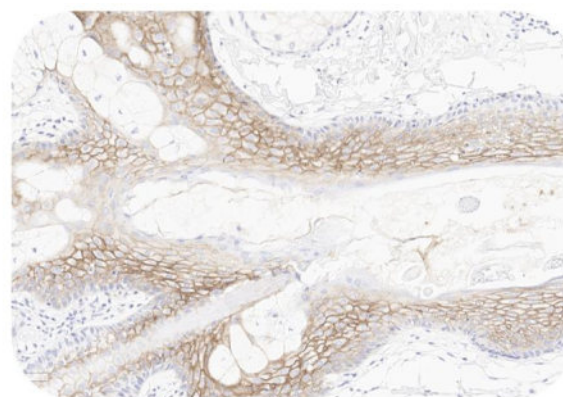
Catalog # HCS-S310



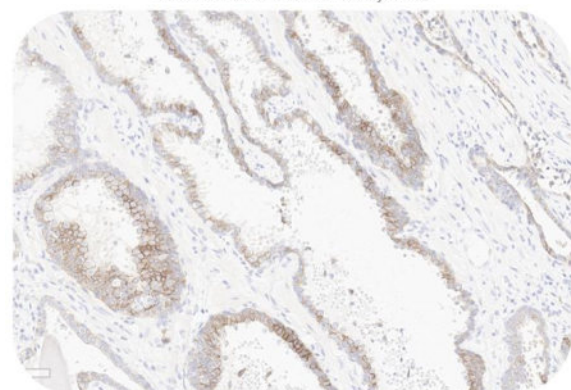
BIOSYSTEMS
Acro



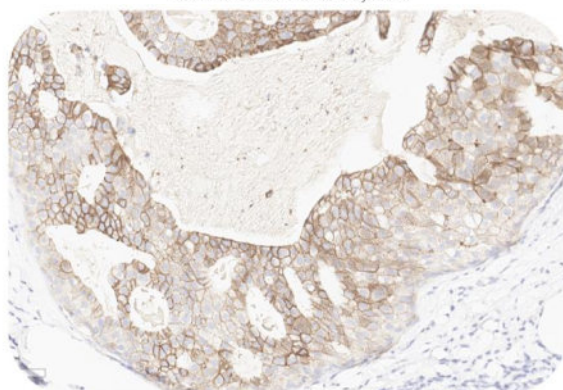
Immunohistochemistry (Formalin/PFA-fixed paraffin-embedded sections) -Recombinant Monoclonal Anti-TROP2 Antibody, Mouse (2A9) (HCS-S310)
Human Ovarian Cancer, 20X



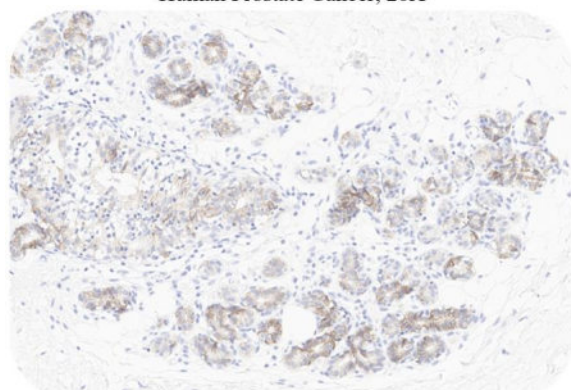
Immunohistochemistry (Formalin/PFA-fixed paraffin-embedded sections) -Recombinant Monoclonal Anti-TROP2 Antibody, Mouse (2A9) (HCS-S310)
Human Skin Cancer, 20X



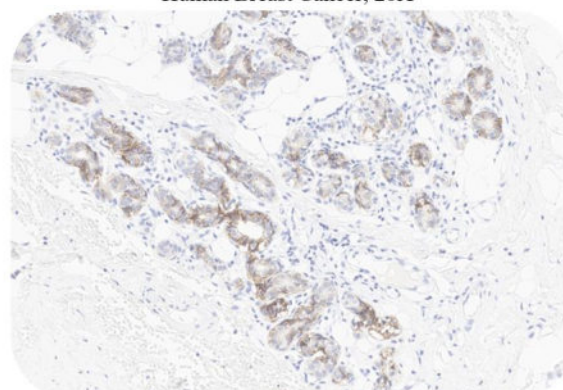
Immunohistochemistry (Formalin/PFA-fixed paraffin-embedded sections) -Recombinant Monoclonal Anti-TROP2 Antibody, Mouse (2A9) (HCS-S310)
Human Prostate Cancer, 20X



Immunohistochemistry (Formalin/PFA-fixed paraffin-embedded sections) -Recombinant Monoclonal Anti-TROP2 Antibody, Mouse (2A9) (HCS-S310)
Human Breast Cancer, 20X



Immunohistochemistry (Formalin/PFA-fixed paraffin-embedded sections) -Recombinant Monoclonal Anti-TROP2 Antibody, Mouse (2A9) (HCS-S310)
Human Triple-Negative Breast Cancer, 20X



Immunohistochemistry (Formalin/PFA-fixed paraffin-embedded sections) -Recombinant Monoclonal Anti-TROP2 Antibody, Mouse (2A9) (HCS-S310)
Human Triple-Negative Breast Cancer, 20X

Immunohistochemical analysis of paraffin embedded human cancer tissue labelled with HCS-S310 at 1/1000 dilution.

Perform heat mediated antigen retrieval with Tris/EDTA buffer pH 9.0 before commencing with IHC staining protocol.

Clinical and Translational Updates

Discounts, Gifts,
and more!



➤ www.acrobiosystems.com