



Synonym

GLP-1-R, GLP-1R, glucagon like peptide 1 receptor

Source

Human GLP1R Protein, His Tag(GLR-H52H7) is expressed from human 293 cells (HEK293). It contains AA Ala 21 - Glu 139 (Accession # [P43220-1](#)).

Predicted N-terminus: Ala 21

Molecular Characterization

GLP1R(Ala 21 - Glu 139)
P43220-1 Poly-his

This protein carries a polyhistidine tag at the C-terminus.

The protein has a calculated MW of 15.6 kDa. The protein migrates as 25-33 kDa under reducing (R) condition (SDS-PAGE) due to glycosylation.

Endotoxin

Less than 0.01 EU per µg by the LAL method.

Purity

>90% as determined by SDS-PAGE.

>90% as determined by SEC-MALS.

Formulation

Lyophilized from 0.22 µm filtered solution in PBS, pH7.4 with trehalose as protectant.

Contact us for customized product form or formulation.

Reconstitution

Please see Certificate of Analysis for specific instructions.

For best performance, we strongly recommend you to follow the reconstitution protocol provided in the CoA.

Storage

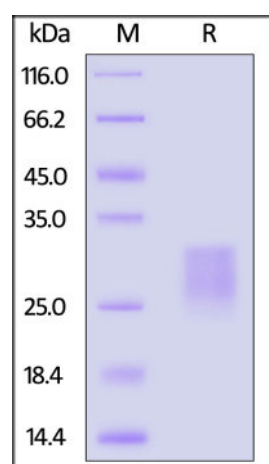
For long term storage, the product should be stored at lyophilized state at -20°C or lower.

Please avoid repeated freeze-thaw cycles.

This product is stable after storage at:

- -20°C to -70°C for 12 months in lyophilized state;
- -70°C for 3 months under sterile conditions after reconstitution.

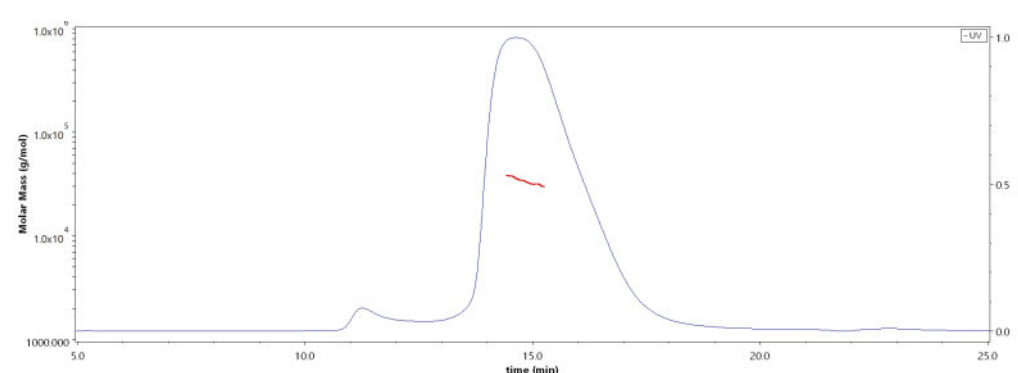
SDS-PAGE



Human GLP1R Protein, His Tag on SDS-PAGE under reducing (R) condition. The gel was stained with Coomassie Blue. The purity of the protein is greater than 90%.

Bioactivity-ELISA

SEC-MALS

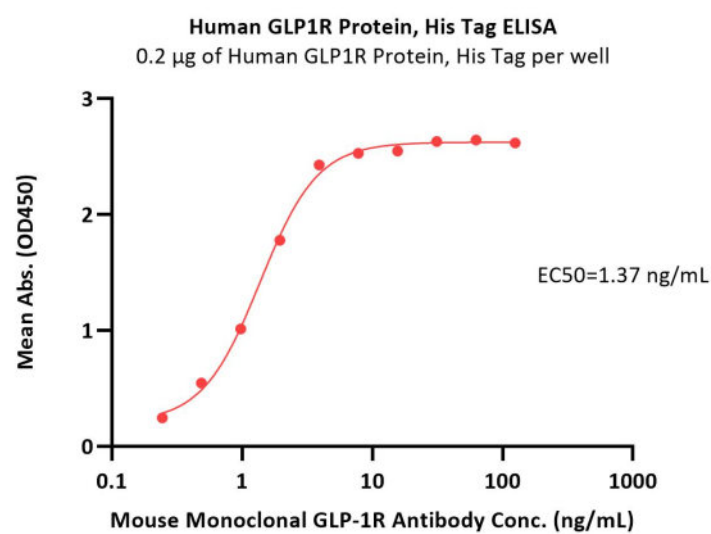


The purity of Human GLP1R Protein, His Tag (Cat. No. GLR-H52H7) is more than 90% and the molecular weight of this protein is around 28-33 kDa verified by SEC-MALS.

[Report](#)

Discounts, Gifts,
and more!





Immobilized Human GLP1R Protein, His Tag (Cat. No. GLR-H52H7) at 2 µg/mL (100 µL/well) can bind Mouse Monoclonal GLP-1R Antibody with a linear range of 0.2-4 ng/mL (QC tested).

Background

G-protein coupled receptor for glucagon-like peptide 1 (GLP-1). Ligand binding triggers activation of a signaling cascade that leads to the activation of adenylyl cyclase and increased intracellular cAMP levels. Plays a role in regulating insulin secretion in response to GLP-1

Clinical and Translational Updates

Discounts, Gifts,
and more!

