

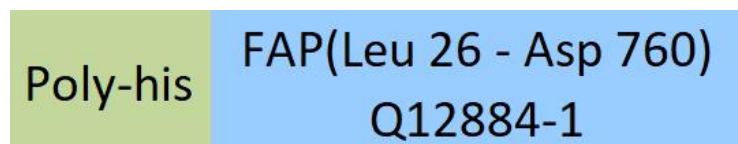
Synonym

FAP,FAPalpha,SIMP,Seprase,APCE

Source

PE-Labeled Human FAP, His Tag (FAP-HP245) is produced via site-specific conjugation of PE to Human FAP, His Tag under optimal conditions with a proprietary technology. Human FAP, His Tag is expressed from human 293 cells (HEK293). It contains AA Leu 26 - Asp 760 (Accession # [Q12884-1](#)).

Predicted N-terminus: His

Molecular Characterization

This protein carries a polyhistidine tag at the N-terminus.

The protein has a calculated MW of 93.1 kDa.

Application

Please note that this product is NOT compatible to streptavidin detection system.

Conjugate

PE

Excitation Wavelength: 488 nm / 561 nm

Emission Wavelength: 575 nm

FormulationLyophilized from 0.22 μ m filtered solution in PBS, 0.5% BSA, pH7.4. Normally trehalose is added as protectant before lyophilization.

Contact us for customized product form or formulation.

Reconstitution

Please see Certificate of Analysis for specific instructions.

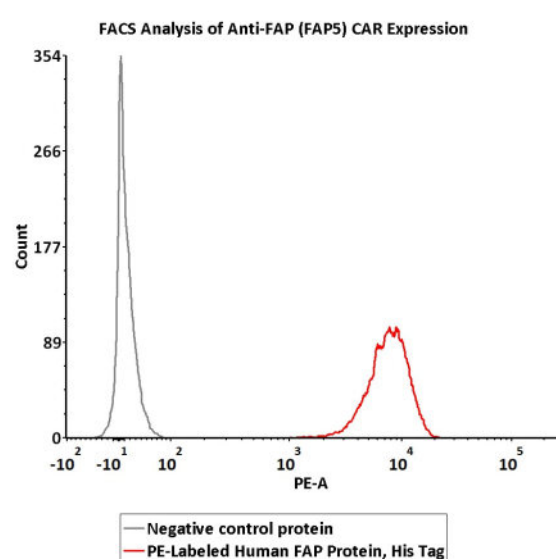
For best performance, we strongly recommend you to follow the reconstitution protocol provided in the CoA.

StorageFor long term storage, the product should be stored at lyophilized state at -20°C or lower.

Please protect from light and avoid repeated freeze-thaw cycles.

This product is stable after storage at:

- -20°C to -70°C for 12 months in lyophilized state;
- -70°C for 3 months under sterile conditions after reconstitution.

Bioactivity-FACS

5×10^5 of anti-FAP CAR-293 cells were stained with 100 μ L of 1:25 dilution (4 μ L stock solution in 100 μ L FACS buffer) of PE-Labeled Human FAP, His Tag (Cat. No. FAP-HP245) and negative control protein respectively. PE signal was used to evaluate the binding activity (QC tested).

Background

FAP (also known as seprase) is a Type II transmembrane serine protease. Both plasma membrane and soluble forms exhibit post-proline cleaving endopeptidase activity, with a marked preference for Ala/Ser-Gly-Pro-Ser/Asn/Ala consensus sequences. Degrade also gelatin, heat-denatured type I collagen. Also has dipeptidyl peptidase activity, with a preference for Ala-Pro, Ile-Pro, Gly-Pro, Arg-Pro and Pro-Pro. The plasma membrane form, in association with either DPP4, PLAU or integrins, is involved in the pericellular proteolysis of the extracellular matrix (ECM), and hence promotes cell adhesion, migration and invasion through the ECM. Promotes glioma cell invasion through the brain parenchyma by degrading the proteoglycan brevican. Acts as a tumor suppressor in melanocytic cells through regulation of cell proliferation and survival in a serine protease activity-independent manner.

Clinical and Translational Updates

Please contact us via TechSupport@acrobiosystems.com if you have any question on this product.