

Biotinylated Rabbit Anti-Eribulin Antibody, Rabbit IgG (1M1G11)

Catalog # ERN-BMY12b



BIOSYSTEMS
Acro

Source

Biotinylated Rabbit Anti-Eribulin Antibody, Rabbit IgG (1M1G11) is a Rabbit monoclonal antibody recombinantly expressed from HEK293 cells.

Clone

1M1G11

Species

Rabbit

Isotype

Rabbit IgG | Rabbit Kappa

Conjugate

Biotin

Antibody Type

Recombinant Monoclonal

Reactivity

Chemical

Specificity

This product is a specific antibody specifically reacts with Eribulin.

Application

Application	Recommended Usage
ELISA	0.1-125 ng/mL

Purity

>90% as determined by SDS-PAGE.

Purification

Protein A purified/ Protein G purified

Formulation

Lyophilized from 0.22 µm filtered solution in PBS, pH7.4 with trehalose as protectant.

Contact us for customized product form or formulation.

Reconstitution

Please see Certificate of Analysis for specific instructions.

For best performance, we strongly recommend you to follow the reconstitution protocol provided in the CoA.

Storage

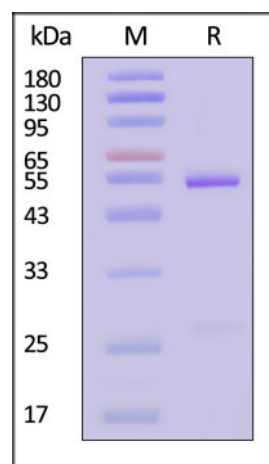
For long term storage, the product should be stored at lyophilized state at -20°C or lower.

Please avoid repeated freeze-thaw cycles.

This product is stable after storage at:

- -20°C to -70°C for 12 months in lyophilized state;
- -70°C for 3 months under sterile conditions after reconstitution.

SDS-PAGE



Biotinylated Rabbit Anti-Eribulin Antibody, Rabbit IgG (1M1G11) on SDS-PAGE under reducing (R) condition. The gel was stained with Coomassie Blue.

Discounts, Gifts,
and more!



➤ www.acrobiosystems.com

9/10/2024

Biotinylated Rabbit Anti-Eribulin Antibody, Rabbit IgG (1M1G11)

Catalog # ERN-BMY12b

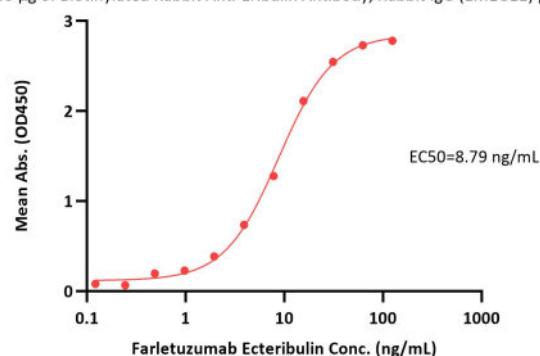


BIOSYSTEMS
Acro

The purity of the protein is greater than 90% (With [Star Ribbon Pre-stained Protein Marker](#)).

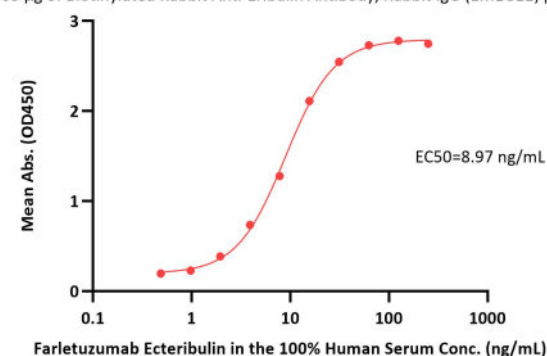
Bioactivity-ELISA

Biotinylated Rabbit Anti-Eribulin Antibody, Rabbit IgG (1M1G11)-Bridging ELISA
0.005 µg of Biotinylated Rabbit Anti-Eribulin Antibody, Rabbit IgG (1M1G11) per well



Immobilized Human FOLR1, Fc Tag (Cat. No. FO1-H5253) at 1 µg/mL, add Farletuzumab Ecteribulin and then add Biotinylated Rabbit Anti-Eribulin Antibody, Rabbit IgG (1M1G11) (Cat. No. ERN-BMY12b) at 0.05 µg/mL. Detection was performed using HRP-conjugated Streptavidin (Acro, Cat. No. STN-NH913) (QC tested).

Biotinylated Rabbit Anti-Eribulin Antibody, Rabbit IgG (1M1G11)-Bridging ELISA
0.005 µg of Biotinylated Rabbit Anti-Eribulin Antibody, Rabbit IgG (1M1G11) per well



Immobilized Human FOLR1, Fc Tag (Cat. No. FO1-H5253) at 1 µg/mL, add Farletuzumab Ecteribulin in the 100% Human Serum and then add Biotinylated Rabbit Anti-Eribulin Antibody, Rabbit IgG (1M1G11) (Cat. No. ERN-BMY12b) at 0.05 µg/mL (QC tested).

Background

Eribulin is a synthetic analogue of the macrocyclic polyether halichondrin B, which was originally isolated from the Asian sea sponge *Halichondria okadai*. Eribulin binds specifically to the β -tubulin subunit on the (+) end of the microtubule and potently inhibits elongation of the formed microtubule, while having little or no effect on microtubule depolymerization. Eribulin's potent antimitotic activity and nonmitotic effects on tumor biology make it an interesting candidate for investigation as a MTA payload for ADCs.

Clinical and Translational Updates

Discounts, Gifts,
and more!



www.acrobiosystems.com

9/10/2024