

**Synonym**

CCN2,NOV2,HCS24,IGFBP8,IBP-8,IGFBP-8,IGF-binding protein 8

**Source**

Mouse CTGF, His Tag(CTF-M52Hc) is expressed from human 293 cells (HEK293). It contains AA Gln 26 - Ala 348 (Accession # [P29268-1](#) ).

Predicted N-terminus: Gln 26

**Molecular Characterization**

CTGF(Gln 26 - Ala 348) P29268-1	Poly-his
------------------------------------	----------

This protein carries a polyhistidine tag at the C-terminus

The protein has a calculated MW of 37.3 kDa. The protein migrates as 37-40 kDa under reducing (R) condition (SDS-PAGE) due to glycosylation.

**Endotoxin**

Less than 1.0 EU per µg by the LAL method.

**Purity**

>90% as determined by SDS-PAGE.

**Formulation**

Lyophilized from 0.22 µm filtered solution in Tris with Potassium glutamate and Arginine, pH7.0 with trehalose as protectant.

Contact us for customized product form or formulation.

**Reconstitution**

Please see Certificate of Analysis for specific instructions.

*For best performance, we strongly recommend you to follow the reconstitution protocol provided in the CoA.*

**Storage**

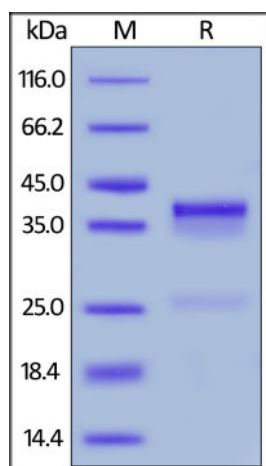
For long term storage, the product should be stored at lyophilized state at -20°C or lower.

*Please avoid repeated freeze-thaw cycles.*

This product is stable after storage at:

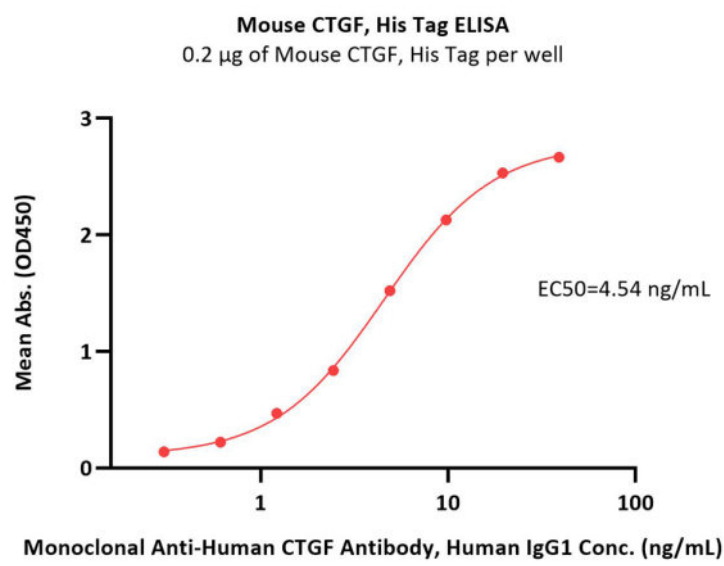
- -20°C to -70°C for 12 months in lyophilized state;
- -70°C for 3 months under sterile conditions after reconstitution.

**SDS-PAGE**



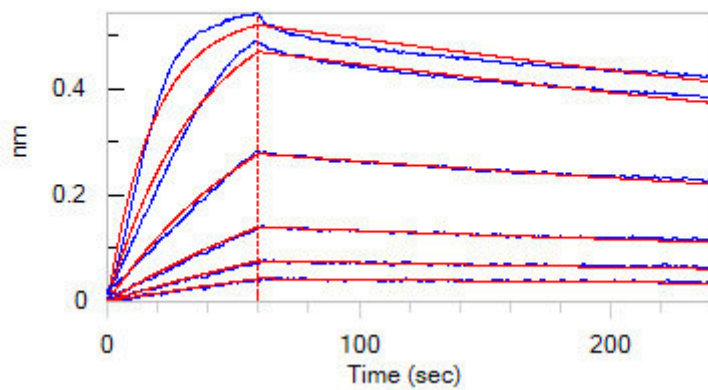
Mouse CTGF, His Tag on SDS-PAGE under reducing (R) condition. The gel was stained with Coomassie Blue. The purity of the protein is greater than 90%.

**Bioactivity-ELISA**



Immobilized Mouse CTGF, His Tag (Cat. No. CTF-M52Hc) at 2 µg/mL (100 µL/well) can bind Monoclonal Anti-Human CTGF Antibody, Human IgG1 with a linear range of 0.3-5 ng/mL (QC tested).

### Bioactivity-BLI



Loaded Monoclonal Anti-Human CTGF Antibody, Human IgG1 on AHC Biosensor, can bind Mouse CTGF, His Tag (Cat. No. CTF-M52Hc) with an affinity constant of 2.46 nM as determined in BLI assay (ForteBio Octet Red96e) (Routinely tested).

### Background

Connective Tissue Growth Factor (CTGF), also known as CCN2, is a member of the CCN (CCN1-6) family of modular matricellular proteins. Like other CCN proteins, mature human CTGF consists of IGF-binding protein domain, a vWF-C domain, a TSP-1 domain, and a cysteine knot heparin-binding domain. CTGF promotes proliferation and differentiation of chondrocytes. Mediates heparin- and divalent cation-dependent cell adhesion in many cell types including fibroblasts, myofibroblasts, endothelial and epithelial cells. Enhances fibroblast growth factor-induced DNA synthesis. Analysis of CCN2 function in vivo has focused primarily on its key role as a mediator of excess ECM synthesis in multiple fibrotic diseases.

### Clinical and Translational Updates

Please contact us via [TechSupport@acrobiosystems.com](mailto:TechSupport@acrobiosystems.com) if you have any question on this product.