



Synonym

CDH6, CAD6, KCAD, K-cadherin, Cadherin-6

Source

Human Cadherin-6 Protein, Fc Tag(CA6-H5258) is expressed from human 293 cells (HEK293). It contains AA Thr 19 - Ala 615 (Accession # [P55285-1](#)).

Predicted N-terminus: Thr 19

Molecular Characterization

Cadherin-6(Thr 19 - Ala 615) P55285-1	Fc(Pro 100 - Lys 330) P01857
--	---------------------------------

This protein carries a human IgG1 Fc tag at the C-terminus. The Human Cadherin-6 will be further processed into mature form (Ser 54 - Ala 615).

The protein has a calculated MW of 92.8 kDa. The protein migrates as 100-120 kDa when calibrated against [Star Ribbon Pre-stained Protein Marker](#) under reducing (R) condition (SDS-PAGE) due to glycosylation.

Endotoxin

Less than 1.0 EU per µg by the LAL method.

Purity

>90% as determined by SDS-PAGE.

>90% as determined by SEC-MALS.

Formulation

Lyophilized from 0.22 µm filtered solution in 50 mM Tris, 100 mM Glycine, 25 mM Arginine, 150 mM NaCl, pH7.5 with trehalose as protectant.

Contact us for customized product form or formulation.

Reconstitution

Please see Certificate of Analysis for specific instructions.

For best performance, we strongly recommend you to follow the reconstitution protocol provided in the CoA.

Storage

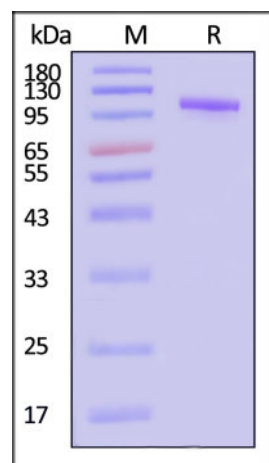
For long term storage, the product should be stored at lyophilized state at -20°C or lower.

Please avoid repeated freeze-thaw cycles.

This product is stable after storage at:

- -20°C to -70°C for 12 months in lyophilized state;
- -70°C for 3 months under sterile conditions after reconstitution.

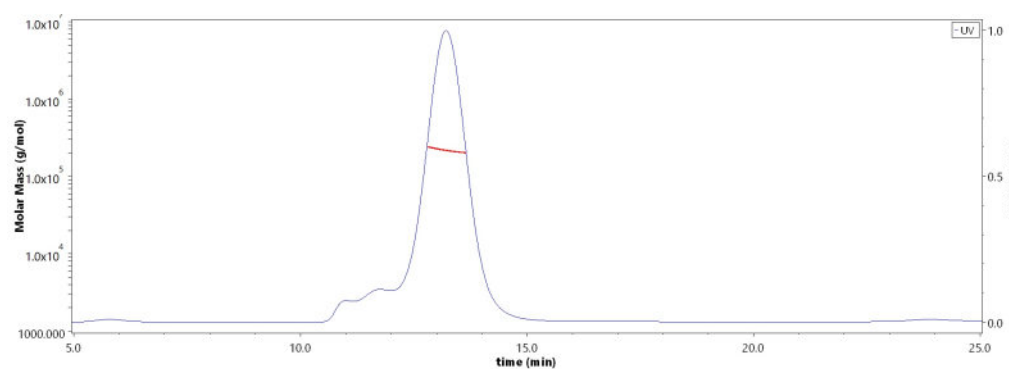
SDS-PAGE



Human Cadherin-6 Protein, Fc Tag on SDS-PAGE under reducing (R) condition. The gel was stained with Coomassie Blue. The purity of the protein is greater than 90% (With [Star Ribbon Pre-stained Protein Marker](#)).

Bioactivity-ELISA

SEC-MALS

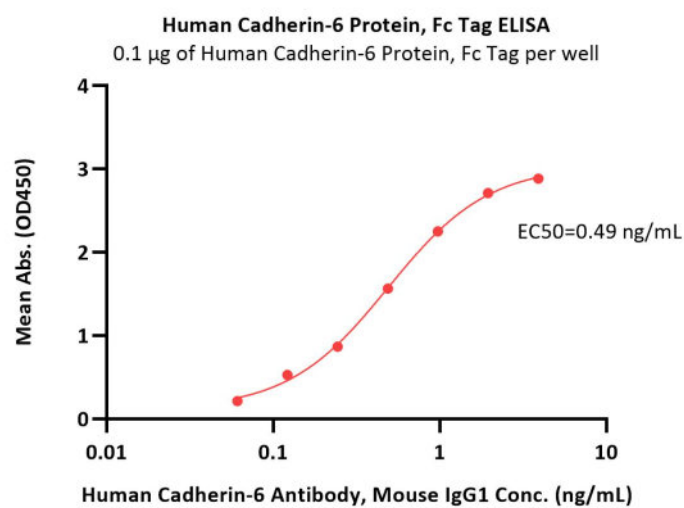


The purity of Human Cadherin-6 Protein, Fc Tag (Cat. No. CA6-H5258) is more than 90% and the molecular weight of this protein is around 200-240 kDa verified by SEC-MALS.

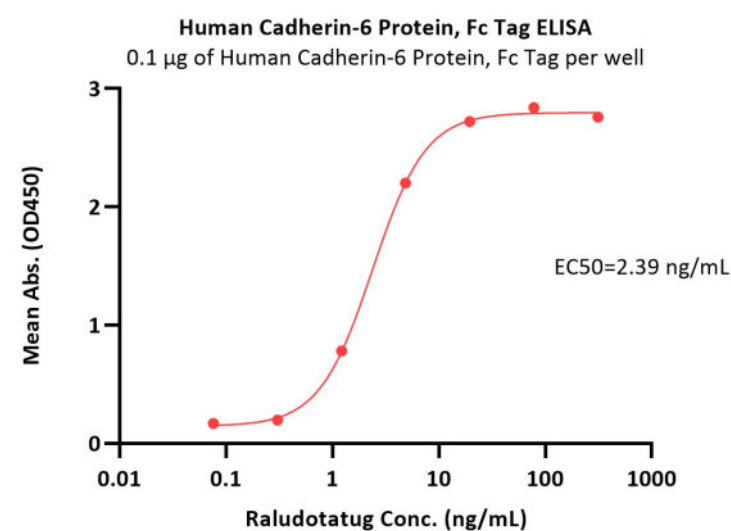
[Report](#)

Discounts, Gifts,
and more!





Immobilized Human Cadherin-6 Protein, Fc Tag (Cat. No. CA6-H5258) at 1 µg/mL (100 µL/well) can bind Human Cadherin-6 Antibody, Mouse IgG1 with a linear range of 0.1-1 ng/mL (QC tested).



Immobilized Human Cadherin-6 Protein, Fc Tag (Cat. No. CA6-H5258) at 1 µg/mL (100 µL/well) can bind Raludotatug with a linear range of 0.08-5 ng/mL (Routinely tested).

Background

Cadherin-6 (CDH6) is also known as Kidney cadherin (K-cadherin or KCAD), is a type II classical cadherin from the cadherin superfamily. Cadherins are calcium-dependent cell adhesion proteins. They preferentially interact with themselves in a homophilic manner in connecting cells; cadherins may thus contribute to the sorting of heterogeneous cell types. CDH6 / KCAD contains five cadherin domains. CDH6 is highly expressed in brain, cerebellum, and kidney. Lung, pancreas, and gastric mucosa show a weak expression and also expressed in certain liver and kidney carcinomas.

Clinical and Translational Updates

Discounts, Gifts,
and more!

