



## Synonym

BTLA,CD272

## Source

Human BTLA (31-150), His Tag(BTA-H52H3) is expressed from human 293 cells (HEK293). It contains AA Lys 31 - Ser 150 (Accession # [AAP44003.1](#)).

## Molecular Characterization

BTLA(Lys 31 - Ser 150)  
AAP44003.1 Poly-his

This protein carries a polyhistidine tag at the C-terminus.

The protein has a calculated MW of 15.7 kDa. The protein migrates as 27-34 kDa when calibrated against [Star Ribbon Pre-stained Protein Marker](#) under reducing (R) condition (SDS-PAGE) due to glycosylation.

## Endotoxin

Less than 1.0 EU per µg by the LAL method.

## Purity

>90% as determined by SDS-PAGE.

## Formulation

Lyophilized from 0.22 µm filtered solution in PBS, pH7.4 with trehalose as protectant.

Contact us for customized product form or formulation.

## Reconstitution

Please see Certificate of Analysis for specific instructions.

*For best performance, we strongly recommend you to follow the reconstitution protocol provided in the CoA.*

## Storage

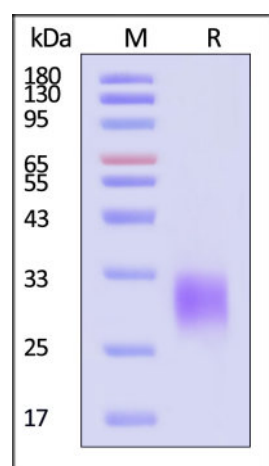
For long term storage, the product should be stored at lyophilized state at -20°C or lower.

*Please avoid repeated freeze-thaw cycles.*

This product is stable after storage at:

- -20°C to -70°C for 12 months in lyophilized state;
- -70°C for 3 months under sterile conditions after reconstitution.

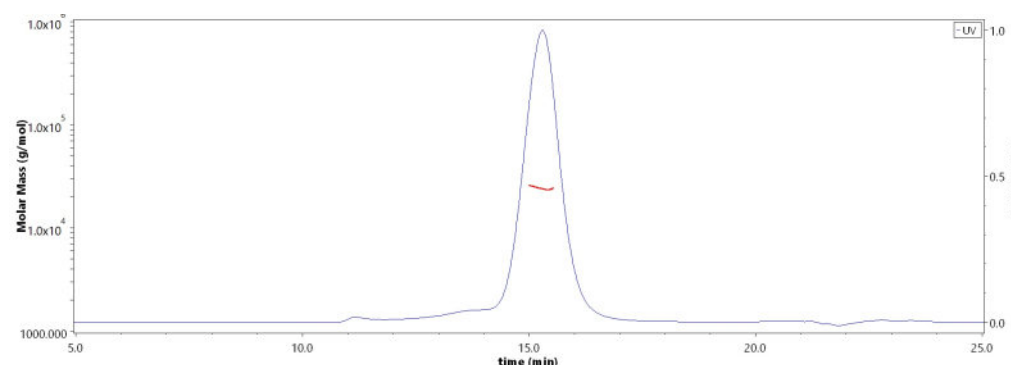
## SDS-PAGE



Human BTLA (31-150), His Tag on SDS-PAGE under reducing (R) condition. The gel was stained with Coomassie Blue. The purity of the protein is greater than 90% (With [Star Ribbon Pre-stained Protein Marker](#)).

## Bioactivity-ELISA

## SEC-MALS



The purity of Human BTLA (31-150), His Tag (Cat. No. BTA-H52H3) is more than 85% and the molecular weight of this protein is around 19-29 kDa verified by SEC-MALS.

[Report](#)

Discounts, Gifts,  
and more!

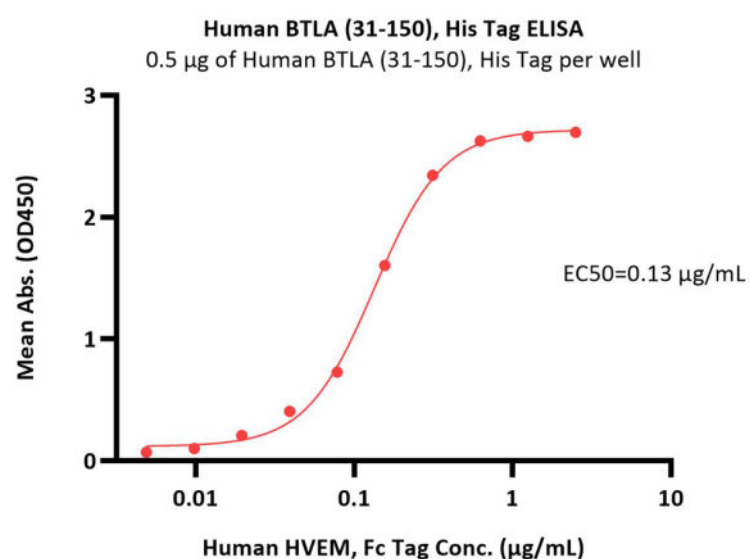


# Human BTLA (31-150) Protein, His Tag (MALS verified)

Catalog # BTA-H52H3

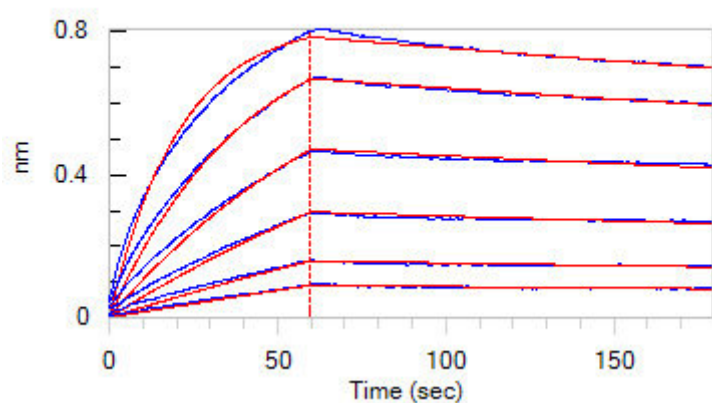


BIOSYSTEMS  
**Acro**  
Surprise Inside!



Immobilized Human BTLA (31-150), His Tag (Cat. No. BTA-H52H3) at 5 µg/mL (100 µL/well) can bind Human HVEM, Fc Tag (Cat. No. HVM-H5258) with a linear range of 0.005-0.313 µg/mL (QC tested).

## Bioactivity-BLI



Loaded Human BTLA (31-150), His Tag (Cat. No. BTA-H52H3) on NTA Biosensor, can Human HVEM, Mouse IgG2a Fc Tag, low endotoxin with an affinity constant of 20.8 nM as determined in BLI assay (ForteBio Octet Red96e) (Routinely tested).

## Background

B- and T-lymphocyte attenuator (BTLA) is also known as B- and T-lymphocyte-associated protein, CD antigen CD272. BTLA contains one Ig-like V-type (immunoglobulin-like) domain. As a lymphocyte inhibitory receptor, BTLA / CD272 inhibits lymphocytes during immune response. BTLA / CD272 can interact with tyrosine phosphatases PTPN6/SHP-1 and PTPN11/SHP-2, and interact with TNFRSF14/HVEM.

## Clinical and Translational Updates

Discounts, Gifts,  
and more!



[www.acrobiosystems.com](http://www.acrobiosystems.com)

11/22/2024