

Human ALPI Protein, His Tag (active enzyme, MALS verified)

Catalog # ALI-H52H3



BIOSYSTEMS
Acro
Surprise Inside!

Synonym

IAP

Source

Human ALPI Protein, His Tag(ALI-H52H3) is expressed from human 293 cells (HEK293). It contains AA Val 20 - Asp 503 (Accession # [P09923-1](#)).

Predicted N-terminus: Val 20

Molecular Characterization

ALPI(Val 20 - Asp 503)
P09923-1 Poly-his

This protein carries a polyhistidine tag at the C-terminus.

The protein has a calculated MW of 54.3 kDa. The protein migrates as 60-65 kDa when calibrated against [Star Ribbon Pre-stained Protein Marker](#) under reducing (R) condition (SDS-PAGE) due to glycosylation.

Endotoxin

Less than 1.0 EU per µg by the LAL method.

Purity

>95% as determined by SDS-PAGE.

>90% as determined by SEC-MALS.

Formulation

Supplied as 0.2 µm filtered solution in 20 mM Tris, 150 mM NaCl, pH7.5 with trehalose as protectant.

Contact us for customized product form or formulation.

Shipping

This product is supplied and shipped with dry ice, please inquire the shipping cost.

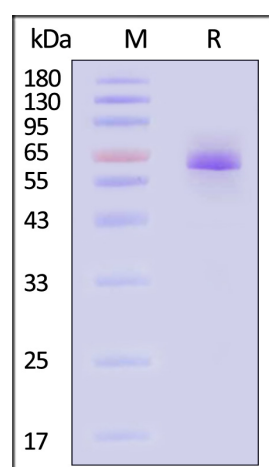
Storage

Please avoid repeated freeze-thaw cycles.

This product is stable after storage at:

- The product MUST be stored at -70°C or lower upon receipt;
- -70°C for 3 months under sterile conditions.

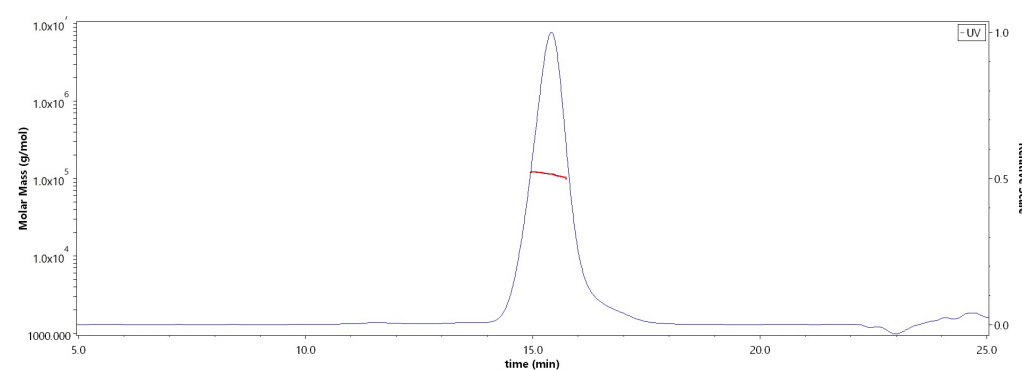
SDS-PAGE



Human ALPI Protein, His Tag on SDS-PAGE under reducing (R) condition. The gel was stained with Coomassie Blue. The purity of the protein is greater than 95% (With [Star Ribbon Pre-stained Protein Marker](#)).

Bioactivity-ELISA

SEC-MALS



The purity of Human ALPI Protein, His Tag (Cat. No. ALI-H52H3) is more than 90% and the molecular weight of this protein is around 100-130 kDa verified by SEC-MALS.

[Report](#)

Discounts, Gifts,
and more!



➤ www.acrobiosystems.com

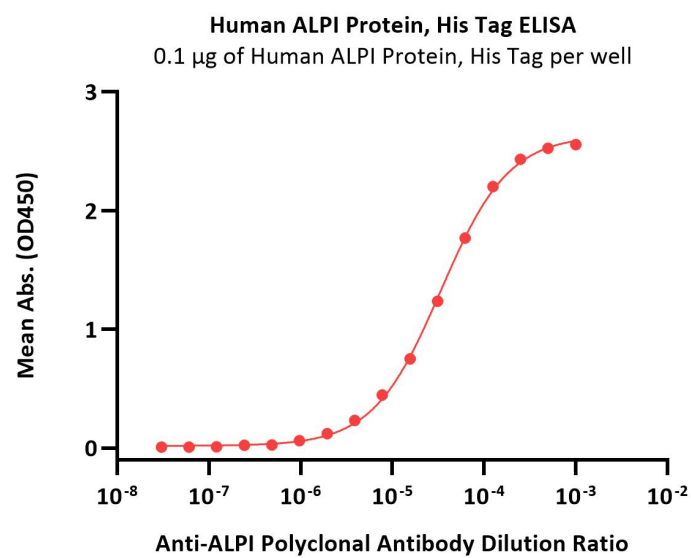
12/23/2024

Human ALPI Protein, His Tag (active enzyme, MALS verified)

Catalog # ALI-H52H3



BIOSYSTEMS
Acro
Surprise Inside!



Immobilized Human ALPI Protein, His Tag (Cat. No. ALI-H52H3) at 1 µg/mL (100 µL/well) can bind various dilution ratio of Anti-ALPI Polyclonal Antibody (QC tested).

Bioactivity

Measured by its ability to cleave a fluorogenic substrate, 4-Methylumbelliferyl phosphate (4-MUP). The specific activity is >800 pmol/min/µg (QC tested).

Background

There are at least four distinct but related alkaline phosphatases: intestinal, placental, placental-like, and liver/bone/kidney (tissue non-specific). The intestinal alkaline phosphatase gene encodes a digestive brush-border enzyme. This enzyme is a component of the gut mucosal defense system and is thought to function in the detoxification of lipopolysaccharide, and in the prevention of bacterial translocation in the gut.

Clinical and Translational Updates

Discounts, Gifts,
and more!



➤ www.acrobiosystems.com

12/23/2024